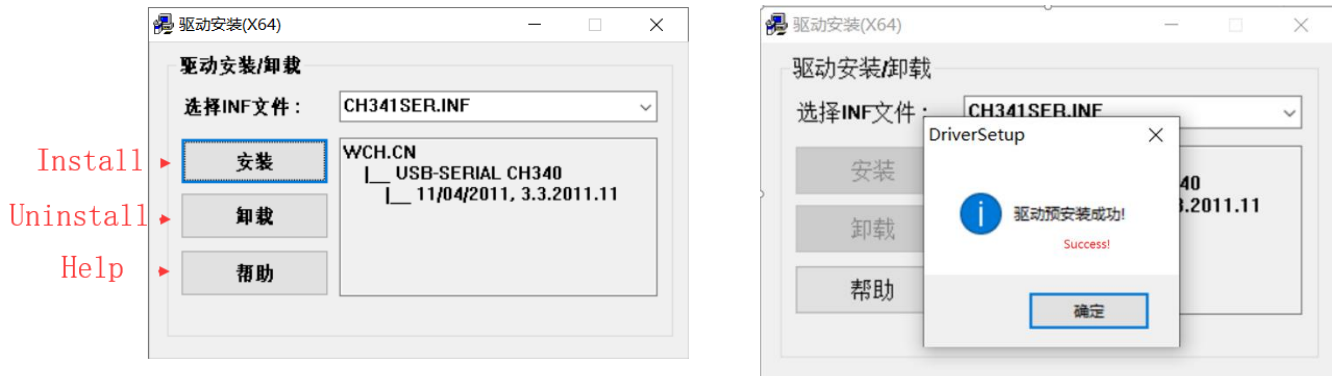


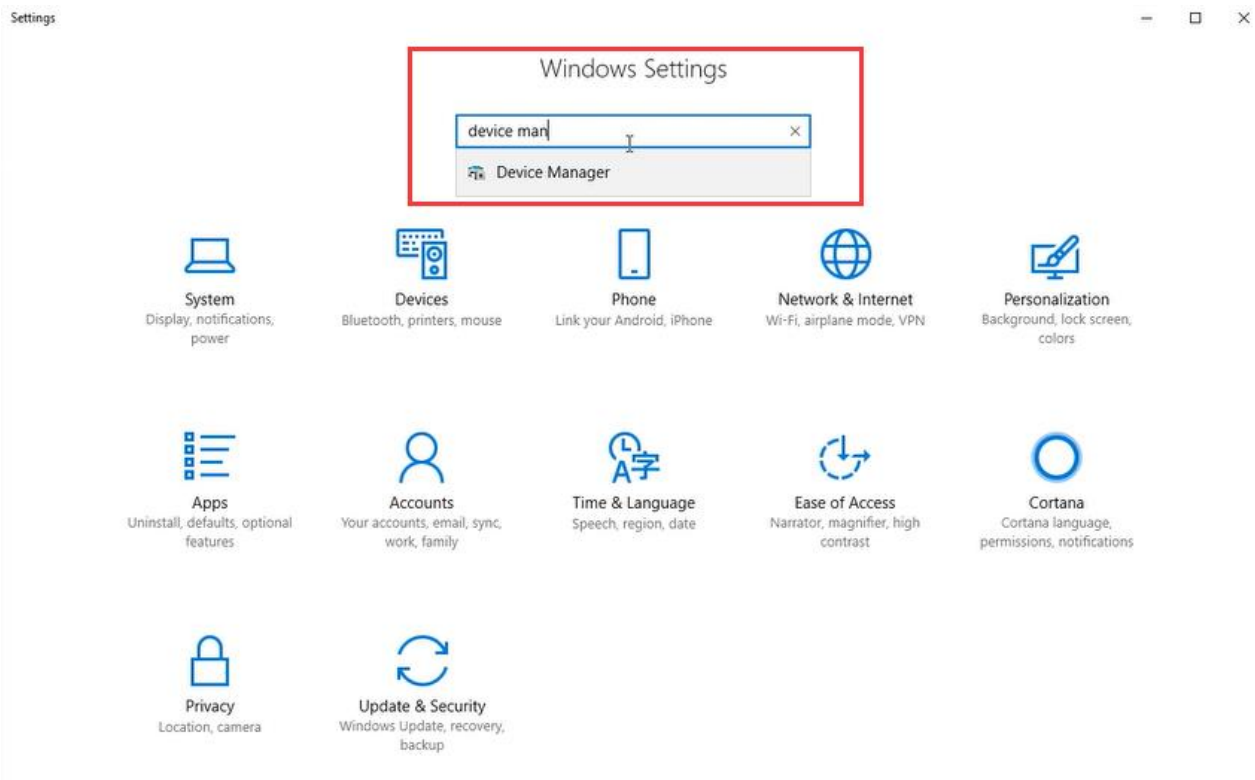
How to install the Programming Cable Driver (WIN 7/8/10 System)

This install guideline are compatible for the programming cable of BAOFENG ALL Analog Radio、TIDRADIO ALL Analog Radio, TID ALL Analog Radio.

1.Click install and wait for the installation



2.Get into “Window Setting”, then search “Device Manager”



3. Open "Device Manager", and unfold Port (COM & LPT) to check the existing port.

