

TIDRADIO TD-F6 Programming Guide

INTRODUCTION

TIDRADIO TD-F6 is a dual-band (VHF, UHF) versatile amateur radio. It offers 128 channels, you can add or remove channels from scanning list and give channels alphanumeric names via programming with a computer. With the enhanced capabilities of the TD-F6 radio, this Programming Guide will help you get a quick start to program the radio.

Contents

1. FTDI Cable Use Guide.....	2
2.Radio Reading	5
3.Channel Information	6
4.Optional Feature	7
1) Basic Setting	8
2) Channel Mode	8
3) DTMF	9
4) Frequency mode	10
5) Backlight and Sound	11
6) FM Radio	11
5. Write and Save	11

1. FTDI Cable Use Guide

FTDI Cable FAQ:

Q: How do I use this cable with my radio?

A: Plug in the cable to your computer and allow the computer to automatically install the drivers.

Q: Do I need to "back-date" or install a prolific driver?

A: No-those procedures found online are for counterfeit cables.
This cable will automatically install with the drivers on your computer.

Q: My computer did not automatically install the driver-now what?

A: Download the latest FTDI driver at :
<http://www.ftdichip.com/Driver/VCP.htm>

Q: I need help using the software

A: walkietalkiesoftware.com is an excellent resource site.
Also visit our Facebook pages (TIDRADIO) for more help.

ERROR: Failed to Connect to the transceiver (Radio)

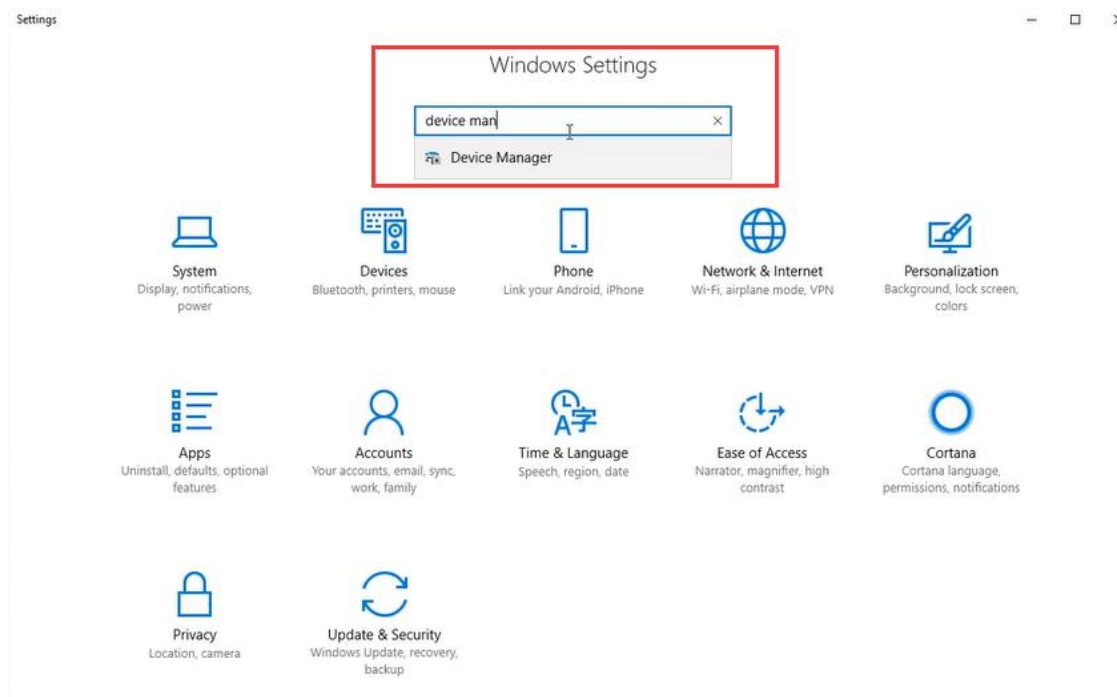
If it says it cannot connect to the radio - this means the cable is working but is not installed correctly into the radio.

Items to Check:

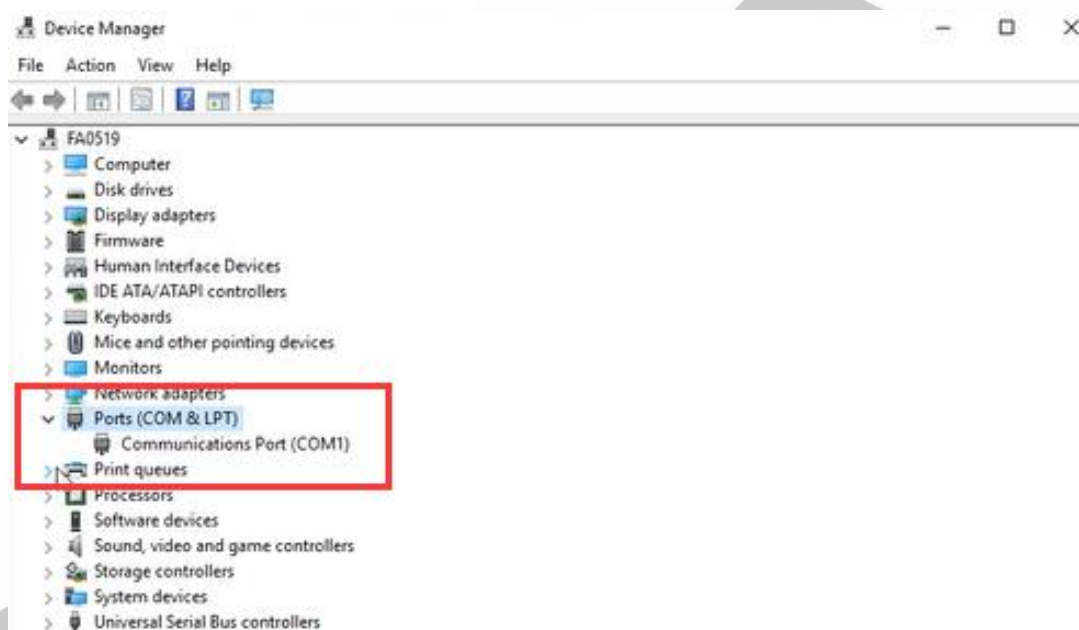
- Radio is turned on
- The cable is FULLY inserted (it can be deceiving but there is a double click)
- Hold the cable into the radio - some radios might not make contact without pressure
- A way to cheat - dampen the pins of the cable before pushing it into the radio. This will give a solid contact

WINDOWS TROUBLESHOOTING HELP:

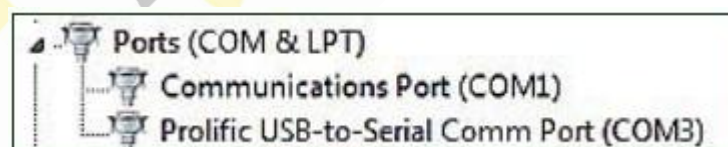
1. Get into "Window Setting", then search "Device Manager".



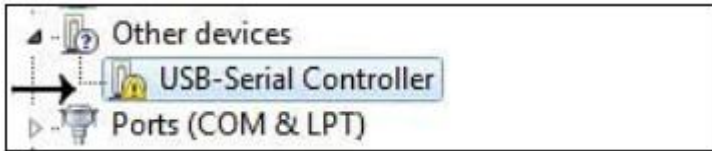
2. Open “Device Manager”, and unfold Port (COM & LPT) to check the existing port.



3. If there is no yellow warning triangle, your system install the correct driver and you are ready to load your programming software. (**Software Website : walkietalkiesoftware.com**)



4. If there is a yellow warning triangle under 'Ports' or 'Other Devices', your operating system has a previous driver that may cause incompatibility issues and you will need to update the driver to the latest driver:



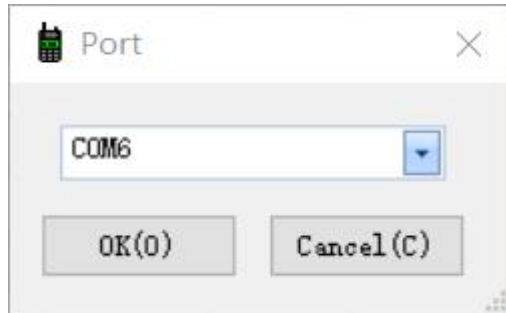
IF THIS HAPPENS UPDATE THE DRIVER AND DOWNLOAD THE LATEST DRIVER AT :


<http://www.ftdichip.com/Drivers/VCP.htm>

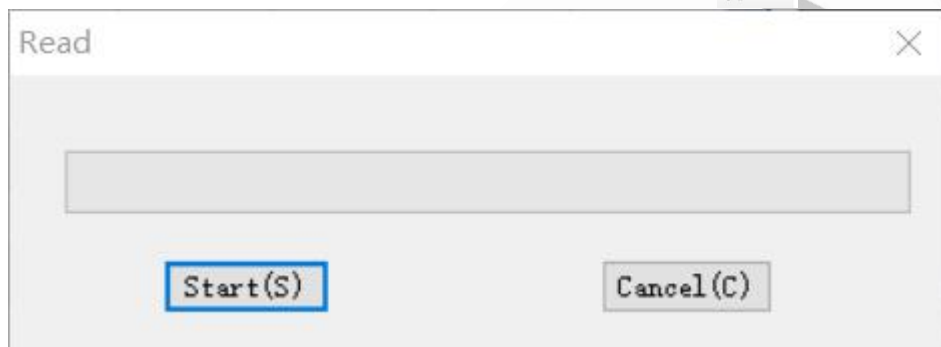
2. Radio Reading

Programming software download link: [**walkietalkiesoftware.com**](http://walkietalkiesoftware.com)

Download and run the TD-F6 programming software, click Setting – Port menu, select the corresponding port number, click “OK”.



Read the current information from the radio to your PC to create an initial program template. Click Program – Read Data From Radio, or simply click the  icon.



Channel Information

Ch...	Band	Rx Freq	Rx QT/DQT	Tx Freq	Tx QT/DQT	Power	W/N	PTT-ID	Busy	Scan Add	Signal	Name
0												
1	VHF/VHF	140.12500	OFF	140.12500	OFF	H	W	OFF	OFF	ON	1	
2	VHF/VHF	145.22500	OFF	145.22500	OFF	H	W	OFF	OFF	ON	1	
3	VHF/VHF	150.32500	OFF	150.32500	OFF	H	W	OFF	OFF	ON	1	
4	VHF/VHF	440.12500	OFF	440.12500	OFF	H	W	OFF	OFF	ON	1	
5	VHF/VHF	445.22500	OFF	445.22500	OFF	H	W	OFF	OFF	ON	1	
6	VHF/VHF	450.32500	OFF	450.32500	OFF	H	W	OFF	OFF	ON	1	
7	VHF/VHF	425.12500	OFF	425.12500	OFF	H	W	OFF	OFF	ON	1	
8												
9												
10												
11												
12												
13												
14												
15												
16												
17												
18												
19												

[Factory Defaults](#)

[Clear Channel Imfors](#)

3. Channel Information

The TD-F6 radio has 128 channels, you can edit the channel number and channel information according to your needs. The following is an introduction to each term.

Name	Meaning	Setting	Description
RX Freq	Receiving frequency	VHF:136-174MHz UHF:400-520MHz	
TX Freq	Transmitting frequency	VHF:136-174MHz UHF:400-520MHz	
RX QT/DQT	Receiving CTCSS/DCS	Refer to the DCS table and CTCSS table in the manual.	Mutes the speaker of the transceiver in the absence of a specific low level digital signal. If the station you are listening to does not transmit this specific signal, you will not hear anything.
TX QT/DQT	Transmitting CTCSS/DCS	Refer to the DCS table and CTCSS table in the manual.	Transmits a specific low-level digital signal to unlock the squelch of a distant receiver (usually a repeater).
POWER	Transmit power	HIGH/LOW	High power:8W Middle:5W LOW: 1W
W/N	Channel bandwidth	WIDE/NARROW	Wideband (25kHz bandwidth) narrowband (12.5 kHz bandwidth).
PTT-ID	When to send the PTT-ID	OFF does not send code; BOT press PTT button to send code; EOT release PTT button to send code; BOTH press and release PTT button to send code	Codes are sent during either the beginning or end of a transmission.
Busy	Busy Channel Lockout	OFF/ON	ON: If the channel is occupied, when you press the [PTT] key on this channel, the radio will make a beep tone and will not transmit any signal. OFF: No matter if the channel is occupied, the radio will transmit the signal when you press the [PTT] key.

Scan add		OFF/ON	In the scan mode, whether add the channel to the scan list. ON : the channel is added to scan list; OFF : the channel cannot be scanned.
Signal	Signal code	1-15	Selects 1 of 15 DTMF codes. The DTMF codes are programmed with software and are up to 5 digits each
Name	Customize channel name	Up to 10 digits.	Support alphanumeric channel name.

4. Optional Feature

Click Edit – Optional Feature, you can set up more functions for the radio.

Optional Feature

Time Out Timer(TOT)[s]: 30
 Squelch Level: 5
 VOX: 9
 Voice: English
 Auto BackLight: 10

Work Mode
☒ Freq ☐ CH CHs: 128

Channel Mode
☒ Menu ☒ Reset
 Channle_A Display: CH + Freq
 Channle_B Display: CH + Freq

DTMF ST: KB ST+ANI ST
 Save Mode: OFF ☐ KB_Lock
 Scan Mode: TO ☐ AutoLock
 PTT-ID: OFF ☐ BCL
 PTT Delay: 5 ☒ Beep

A Band Freq Mode
 Freq: 470.62500 MHz
 Band: VHF
 Freq Range: 400-519.99750
 Tx Power: High
 Rx QT/DQT: OFF
 Tx QT/DQT: OFF
 W/N: Wide
 Step: 10.00 KHz
 SFT_D: OFF
 Offset: 00.000 MHz
 Signal: 1

B Band Freq Mode
 Freq: 136.02500 MHz
 Band: VHF
 Freq Range: 136-259.99750
 Tx Power: High
 Rx QT/DQT: OFF
 Tx QT/DQT: OFF
 W/N: Wide
 Step: 20.00 KHz
 SFT_D: OFF
 Offset: 00.000 MHz
 Signal: 1

Wait Backlight: Purpl
 Rx Backlight: Blue
 Tx Backlight: Orang
 Tail Noise Clear: ON
 Pass Repet Noise: 500
 Pass Repet Noise: OFF
 Display Mode Of: MSG

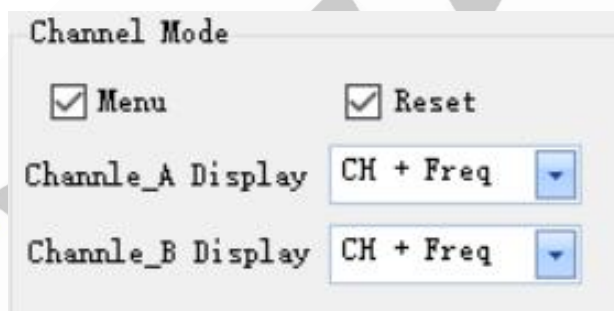
☒ FM Radio Enable
☒ Alarm Sound
 Alarm Mode: CODE
 Roger: OFF
 Tx Under TDR Start: OFF
☐ TDR

Default Close

1) Basic Setting

Name	Meaning	Settings	Description
TOT(Time Out)	Transmission time-out timer	15-600(s)	This feature provides a limits transmission time to a programmed value. This will promote battery conservation by not allowing you to make excessively long-timetransmissions and in the event of a stuck PTT switch, it can prevent interference to other users as well as battery depletion.
Squelch Level		0-9	Mutes the speaker of the transceiver in the absence of a strong signal. Squelch is either OFF or 1-9 levels. The higher level, the stronger the signal must be to in-mute the speaker.
VOX	Voice operated TX	OFF/1-10	When enabled it is not necessary to push the [PTT] button on the transceiver. Adjust the gain level to an appropriate sensitivity to allow smooth transmission.
Voice switch		ON/OFF	Toggle voice prompt switch
Language		Chinese/English	Switch the language of menu display and voice prompts
Auto backlight	Display time	OFF/0-10 (s)	Time-out for the LCD backlight.
Work mode		VFO	CHs is channel quantity
		Channel	

2) Channel Mode



You can customize the display on Channel A/B:

CH + Name: Display Channel Number and Channel Name (Name column in Channel information part)

CH + Freq: Display Channel Number and Frequency

3) DTMF

Name	Setting	Description
DTMF ST (DTMF side tone of transmit code)	OFF: No DTMF Side Tones are heard	Determines when DTMF side tones can be heard from the transceiver speaker
	KB Side Tone: Side Tones are heard only from manually keyed DTMF codes	
	ANI Side Tone: Side Tones are heard only from automatically keyed DTMF codes	
	KB ST+ANI ST: All DTMF Side Tones are heard	
Save mode	OFF/Mode 1/Mode 2/Mode 3/Mode 4	Selects the ratio of sleep cycles to awake cycles (Mode 1/Mode 2/Mode 3/Mode 4). The higher number the longer the battery lasts. When enabled, a word or two might be missed when the frequency being monitored becomes active.
Scan mode	TO: Time Operation - scanning will resume after a fixed time has passed	Scanning Resume Method
	CO: Carrier Operation -Scanning Resume Method scanning will resume after the signal disappears	
	SE: Search Operation scanning will not resume	
PTT_ID	OFF: No ID is sent	When to Send PTT-ID; Codes are sent during either the beginning or end of a transmission.
	BOT : The selected S-CODE is sent at the beginning	
	EOT: The selected S-CODE is sent at the ending	
	BOTH: The selected SCODE is sent at the beginning and ending	
PTT Delay	0-30ms	Signal code sending delay
KB_LOCK		If you select this option, the keyboard is locked.
AUTOLK (automatic keypad lock)		When ON, the keypad will be locked if not used in 8 seconds. Pressing the [# P/O] key for 2 seconds will unlock the keypad.
BCL(busy channel Lock-out)		Check: If the channel is occupied, when you press the [PTT] key on this channel, the radio will make a beep

		tone and will not transmit any signal. Uncheck: No matter if the channel is occupied, the radio will transmit the signal when you press the [PTT] key.
Beep(keypad beep)		Allows audible confirmation of a key press

4) Frequency mode

STEP: Select the amount of frequency change in VFO/Frequency mode when scanning or pressing the keys.

SFT_D: Enable access of repeaters in VFO/Frequency Mode ([OFF]: TX = RX (simplex); [+]: TX will be shifted higher than RX in frequency; [-]: TX will be shifted lower than RX in frequency)

Offset: Specifies the difference between the TX and RX frequency (For the explanation of TX Power, RX QT/DQT, TX QT/DQT, W/N, Signal, please refer to the section 3)

A Band Freq Mode

Freq MHz

Band

Freq Range

Tx Power

Rx QT/DQT

Tx QT/DQT

W/N

Step

SFT_D

Offset MHz

Signal

B Band Freq Mode

Freq MHz

Band

Freq Range

Tx Power

Rx QT/DQT

Tx QT/DQT

W/N

Step

SFT_D

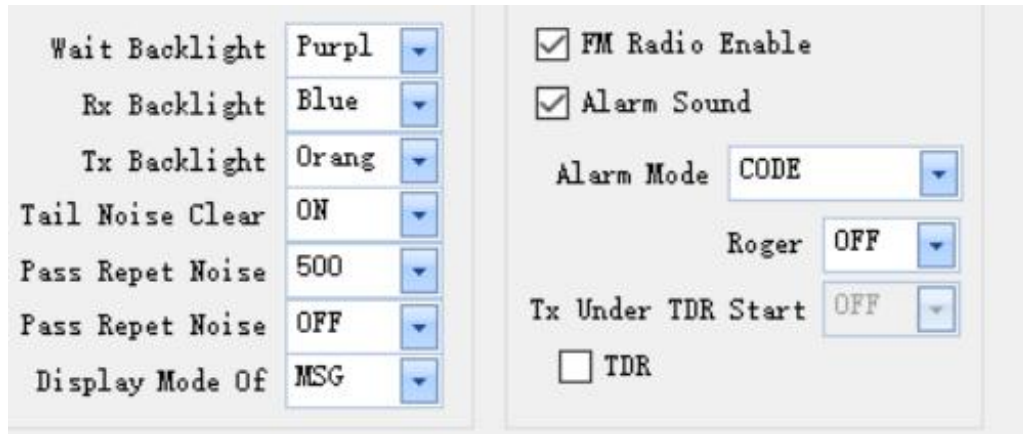
Offset MHz

Signal

5) Backlight and Sound

RPT Noise Clear: Squelch Tail elimination

RPT Noise Detect: Trunk tail delay



Wait Backlight	Purpl	<input checked="" type="checkbox"/> FM Radio Enable
Rx Backlight	Blue	<input checked="" type="checkbox"/> Alarm Sound
Tx Backlight	Orang	Alarm Mode CODE
Tail Noise Clear	ON	Roger OFF
Pass Repet Noise	500	Tx Under TDR Start OFF
Pass Repet Noise	OFF	<input type="checkbox"/> TDR
Display Mode Of	MSG	

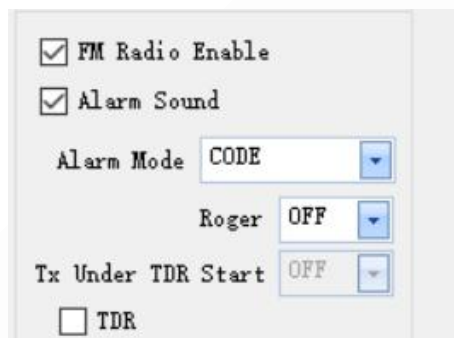
6) FM Radio

FM Radio Enable: When you check off, FM Radio function will be activated on the radio.

Roger: Sends an end-of-transmission tone to indicate to other stations that the transmission has ended

TX Under TDR Start: Transmit selection while in Dual Watch mode, when enabled, priority is returned to selected display once the signal in the other display disappears.

TDR: Dual Watch mode, the ability to monitor two channels at once can be a valuable asset.



<input checked="" type="checkbox"/> FM Radio Enable
<input checked="" type="checkbox"/> Alarm Sound
Alarm Mode CODE
Roger OFF
Tx Under TDR Start OFF
<input type="checkbox"/> TDR

5. Write and Save

Click Program - Write Data To Radio, or click the  icon to write and save the setting to the radio.

*If you have any problem with the TD-F6 radio using or programming, please don't hesitate to contact us

via support: walkietalkiesoftware.com. It's always our honor to help.