

TID TD-V2 Programming Guide

INTRODUCTION

TID TD-V2 is a UHF radio. It offers 16 channels, you can add or remove channels from scanning list and give channels alphanumeric names via programming with a computer. This Programming Guide will help you get a quick start to program the radio.

*If you have any problem with the TD-V2 radio using or programming, please don't hesitate to contact us via support: walkietalkiesoftware.com. Also visit our Facebook pages ([TIDRADIO](#)) for more help. It's always our honor to help.

Contents

| | |
|---|----|
| 1. Frequency Chart..... | 2 |
| 2. Preparation before Programming..... | 2 |
| 3. Manufacture Software Programming Process | 6 |
| 4. Chirp Software Programming Process..... | 11 |

1. Frequency Chart

16 Modifiable FRS Two Way Channels (Channels 1-16) - Receive and Transmit.

| CH. | Rx Freq. | Tx Freq. | Tx Power | Type of radio |
|-----|------------|------------|----------|---------------|
| 1 | 462. 56250 | 462. 56250 | HIGH | FRS |
| 2 | 462. 58750 | 462. 58750 | HIGH | FRS |
| 3 | 462. 61250 | 462. 61250 | HIGH | FRS |
| 4 | 462. 63750 | 462. 63750 | HIGH | FRS |
| 5 | 462. 66250 | 462. 66250 | HIGH | FRS |
| 6 | 462. 68750 | 462. 68750 | HIGH | FRS |
| 7 | 462. 71250 | 462. 71250 | HIGH | FRS |
| 8 | 462. 55000 | 462. 55000 | Low | FRS |
| 9 | 462. 57500 | 462. 57500 | Low | FRS |
| 10 | 462. 60000 | 462. 60000 | Low | FRS |
| 11 | 462. 62500 | 462. 62500 | Low | FRS |
| 12 | 462. 65000 | 462. 65000 | Low | FRS |
| 13 | 462. 67500 | 462. 67500 | Low | FRS |
| 14 | 462. 70000 | 462. 70000 | Low | FRS |
| 15 | 462. 72500 | 462. 72500 | HIGH | FRS |
| 16 | 462. 56250 | 462. 56250 | HIGH | FRS |

2.Preparation before Programming

2.1. Computer System Requirements

Manufacture Programming Software Operating System: Windows 7, Windows 8 and Windows 10

CHIRP Programming Software Operating System: Windows 7\8\10,

Windows 2000, Mac OS, Linux

2.2. Programming Cable

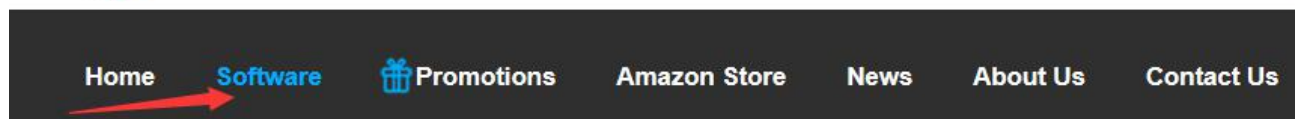
A.CH340 programming cable - The driver should be installed before programming.

You can search [B08QCW5CZJ](#) on Amazon to purchase a CH340 programming cable if you do not have one.

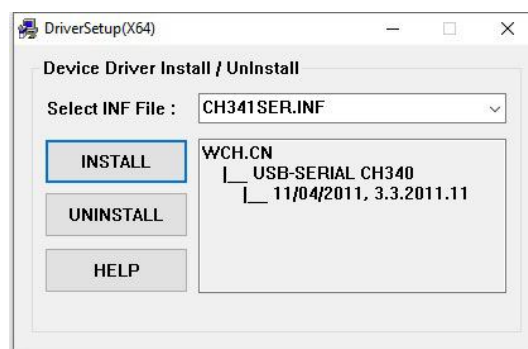
Product link:

https://www.amazon.com/TIDRADIO-Driver-Programming-Portable-Radios/dp/B08QCW5CZJ/ref=sr_1_1?dchild=1&keywords=B08QCW5CZJ&qid=1627973624&sr=8-1

Driver download link:walkietalkiesoftware.com



- 1) Find the corresponding driver of the system.
- 2) Click and wait for the download.
- 3) Click install and wait for the installation



B. If you use a FTDI cable, it does not need to be installed with a driver. You can just plug in and use directly.

You can search [B08CB5KT5M](#) on Amazon to purchase a FTDI cable if you do not have one.

Product link:

https://www.amazon.com/TIDRADIO-Programming-BaoFeng-Retevis-Radioddy/dp/B08CB5KT5M/ref=sr_1_1?dchild=1&keywords=B08CB5KT5M&qid=1627973909&sr=8-1

1) If your computer did not automatically install the driver, you will need to update the driver to the latest driver

Download the latest FTDI driver at : <https://ftdichip.com/drivers/vcp-drivers/>

2.3. Software Download & Install

1) Turn on the computer, check if your computer system meets the requirements.

2) Download the manufacture software on walkietalkiesoftware.com or CHIRP software on <https://chirp.danplanet.com/>

3) Install the programming software

2.4. Connect your Walkie Talkie with Computer

1) USB programming cable connects with the computer end.

2) Connect the other end of the cable with your walkie talkie.

3) When both ends have been connected, turn on your radio. Make sure it has enough power during the programming procedure.

ERROR: Failed to Connect to the transceiver (Radio)

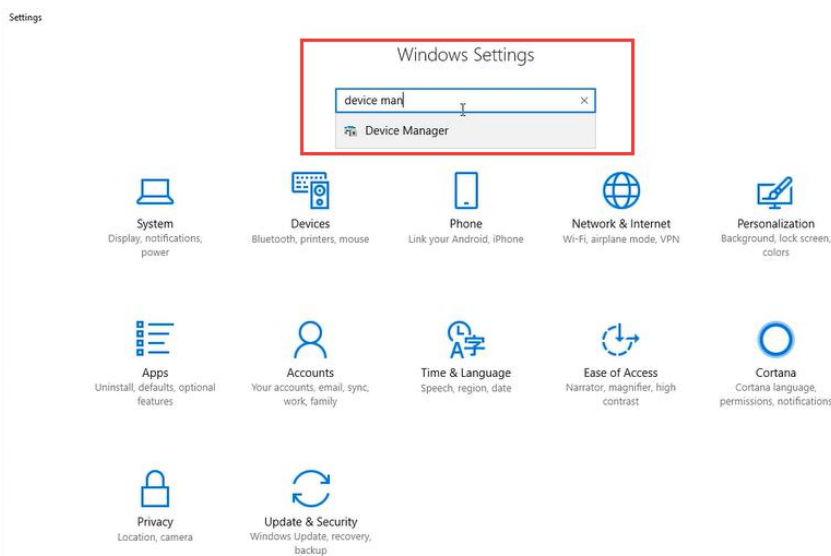
If it says it cannot connect to the radio - this means the cable is working but is not installed correctly into the radio.

Items to Check:

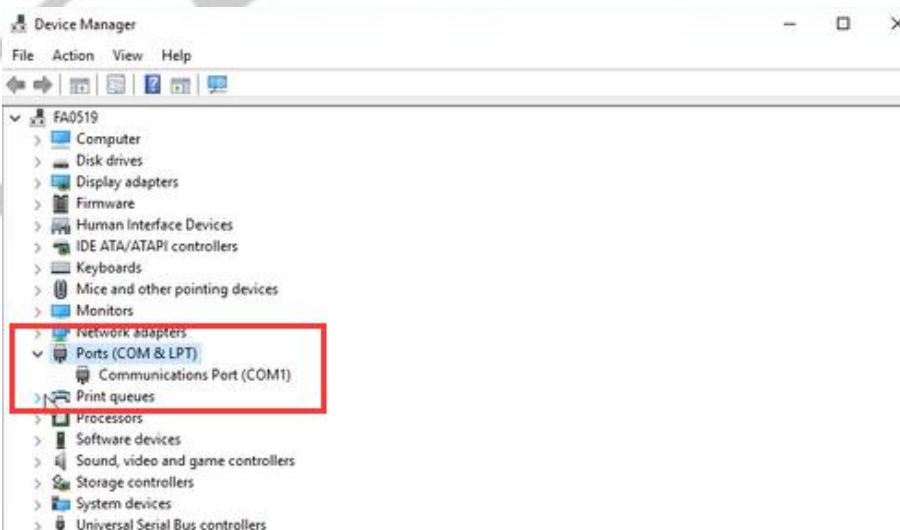
- Radio is turned on
- The cable is FULLY inserted (it can be deceiving but there is a double click)
- Hold the cable into the radio - some radios might not make contact without pressure
- A way to cheat - dampen the pins of the cable before pushing it into the radio. This will give a solid contact

2.5.How to choose your port?

1.Get into “Window Setting”, then search “Device Manager”.



2.Open “Device Manager”, and unfold Port (COM & LPT) to check the existing port.



3.CH340 programming cable port is **USB-SERIAL CH340 (COM?)**



端口 (COM 和 LPT)



USB-SERIAL CH340 (COM6)

4.FTDI programming cable port is **USB Serial Port (COM?)**



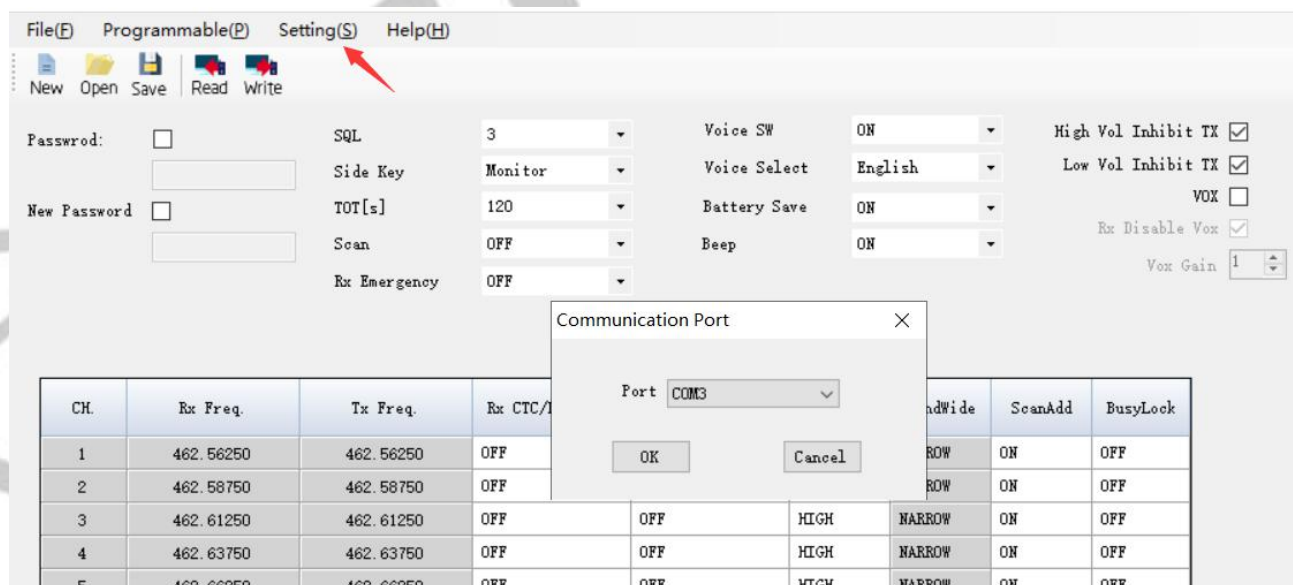
端口 (COM 和 LPT)



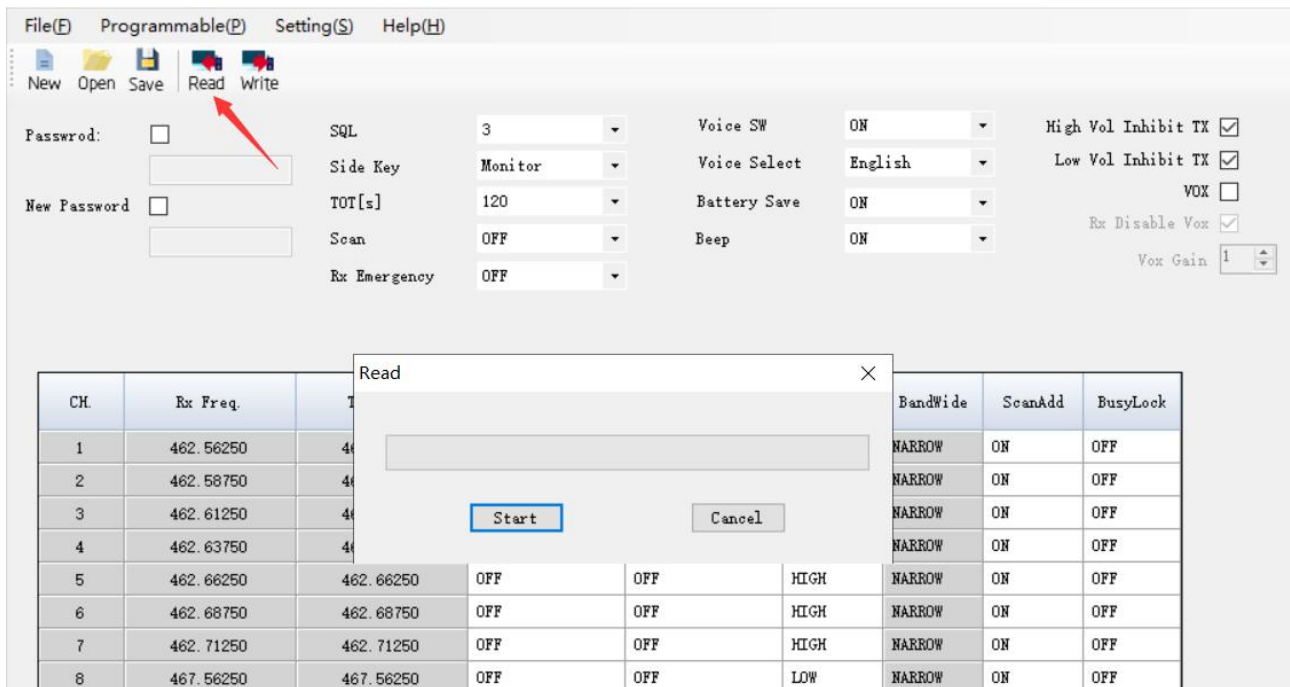
USB Serial Port (COM3)

3.TD-V2 Manufacture Software Programming Process

1) Download and open the manufacture software. Click "Setting → Communication Port" and then Confirm the port the same as the port viewed by Device Manager, then click the "OK" button.



2) Click the "Read" button, then click "Start" and ready to read the data from your radio.(Make sure the radio is turned on)



3) You will come to the parameter page and adjust the parameters. According to the US FCC rule, FRS radio cannot modify the frequency and bandwvide.

| CH. | Rx Freq. | Tx Freq. | Rx CTC/DCS Code | Tx CTC/DCS Code | Tx Power | BandWide | ScanAdd | BusyLock |
|-----|-----------|-----------|-----------------|-----------------|----------|----------|---------|----------|
| 1 | 462.56250 | 462.56250 | 67.0 | 67.0 | HIGH | NARROW | ON | OFF |
| 2 | 462.58750 | 462.58750 | 118.8 | 118.8 | HIGH | NARROW | ON | OFF |
| 3 | 462.61250 | 462.61250 | 127.3 | 127.3 | HIGH | NARROW | ON | OFF |
| 4 | 462.63750 | 462.63750 | 131.8 | 131.8 | HIGH | NARROW | ON | OFF |
| 5 | 462.66250 | 462.66250 | 136.5 | 136.5 | HIGH | NARROW | ON | OFF |
| 6 | 462.68750 | 462.68750 | 141.3 | 141.3 | HIGH | NARROW | ON | OFF |
| 7 | 462.71250 | 462.71250 | 146.2 | 146.2 | HIGH | NARROW | ON | OFF |
| 8 | 462.55000 | 462.55000 | 123.0 | 123.0 | HIGH | NARROW | ON | OFF |
| 9 | 462.57500 | 462.57500 | D743I | D743I | HIGH | NARROW | ON | OFF |
| 10 | 462.60000 | 462.60000 | D331I | D331I | HIGH | NARROW | ON | OFF |
| 11 | 462.62500 | 462.62500 | 127.3 | 127.3 | HIGH | NARROW | ON | OFF |
| 12 | 462.65000 | 462.65000 | D243I | D243I | HIGH | NARROW | ON | OFF |
| 13 | 462.67500 | 462.67500 | D606N | D606N | HIGH | NARROW | ON | OFF |
| 14 | 462.70000 | 462.70000 | D731I | D731I | HIGH | NARROW | ON | OFF |
| 15 | 462.72500 | 462.72500 | 136.8 | 136.8 | HIGH | NARROW | ON | OFF |
| 16 | 462.56250 | 462.56250 | D243N | D243N | HIGH | NARROW | ON | OFF |

Channel Information

The TD-V2 radio has 16 channels, you can edit the channel number and channel information according to your needs. The following is an introduction to each term.

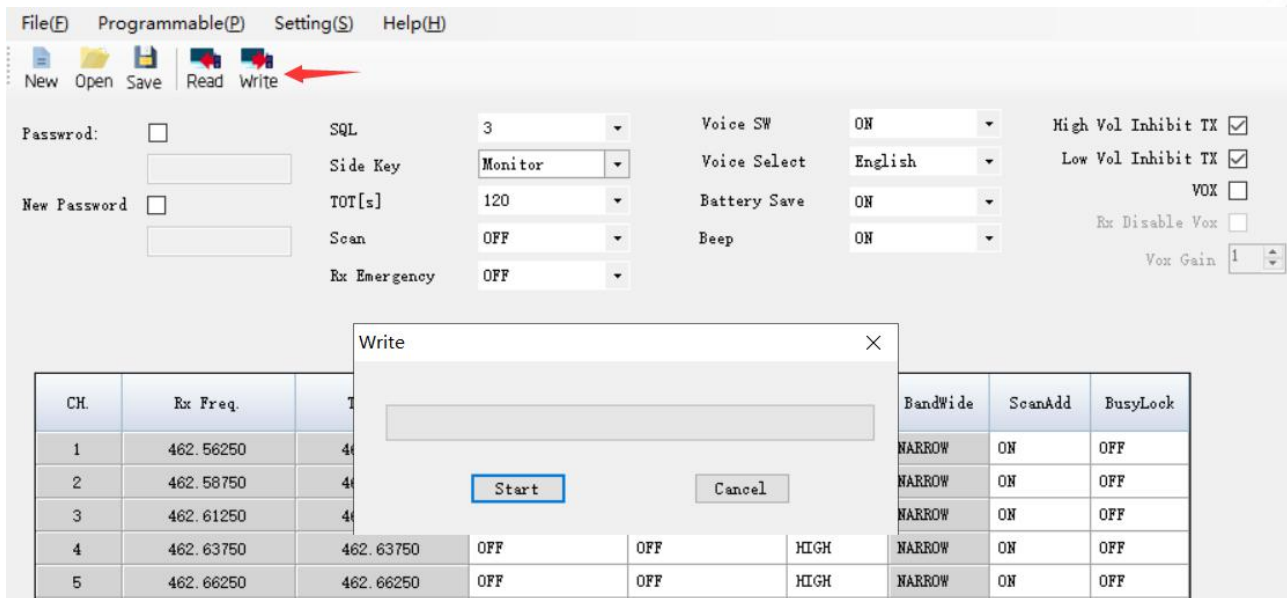
| Name | Meaning | Setting | Description |
|-----------------|------------------------|---|--|
| Rx Freq. | Receiving frequency | FRS frequency (Fixed) | |
| Tx Freq. | Transmitting frequency | FRS frequency (Fixed) | |
| Rx CTC/DCS Code | Receiving CTCSS/DCS | Refer to the DCS table and CTCSS table in the manual. | Mutes the speaker of the transceiver in the absence of a specific low level digital signal. If the station you are listening to does not transmit this specific signal, you will not hear anything. |
| Tx CTC/DCS Code | Transmitting CTCSS/DCS | Refer to the DCS table and CTCSS table in the manual. | Transmits a specific low-level digital signal to unlock the squelch of a distant receiver (usually a repeater). |
| Tx POWER | Transmit power | HIGH/LOW | High power:2W Low power:0.5W |
| BandWide | | Narrow (Fixed) | |
| ScanAdd | | OFF/ON | In the scan mode, whether add the channel to the scan list. ON: the channel is added to scan list; OFF: the channel cannot be scanned. |
| BusyLock | Busy Channel Lockout | OFF/ON | ON: If the channel is occupied, when you press the [PTT] key on this channel, the radio will make a beep tone and will not transmit any signal. OFF: No matter if the channel is occupied, the radio will transmit the signal when you press the [PTT] key. |

4) You can adjust the parameters (VOX Function, Squelch, Side Key, Voice Prompt, Scan, etc.)

Basic Setting

| Name | Meaning | Settings | Description |
|--------------|-----------------------------------|-----------------|---|
| SQL | Squelch Level | 0-9 | Mutes the speaker of the transceiver in the absence of a strong signal. Squelch is either 0 or 1-9 levels. The higher level, the stronger the signal must be to in-mute the speaker. |
| Side Key | OFF/Monitor/High /Low Power/Alarm | | You can customize the function of the Side Key |
| TOT[s] | Transmission time-out timer | OFF/30-300s | This feature provides a limits transmission time to a programmed value. This will promote battery conservation by not allowing you to make excessively long-time transmissions and in the event of a stuck PTT switch, it can prevent interference to other users as well as battery depletion. |
| Scan | | OFF/ON | In the scan mode, whether add the channel to the scan list. ON : the channel is added to scan list; OFF : the channel cannot be scanned |
| Rx Emergency | | OFF/ON | |
| Voice SW | | OFF/ON | Switch voice prompts |
| Voice Select | | English/Chinese | Switch the language |
| Battery Save | | OFF/ON | |
| Beep | | OFF/ON | |
| VOX | Voice operated TX | 1-5 | When enabled it is not necessary to push the [PTT] button on the transceiver. Adjust the gain level to an appropriate sensitivity to allow smooth transmission. |

5) Finally, all the modification will be saved by clicking the "Write" button, then clicking the "Start" button on the popup. And you can check the setting you modified after reboot the radio.

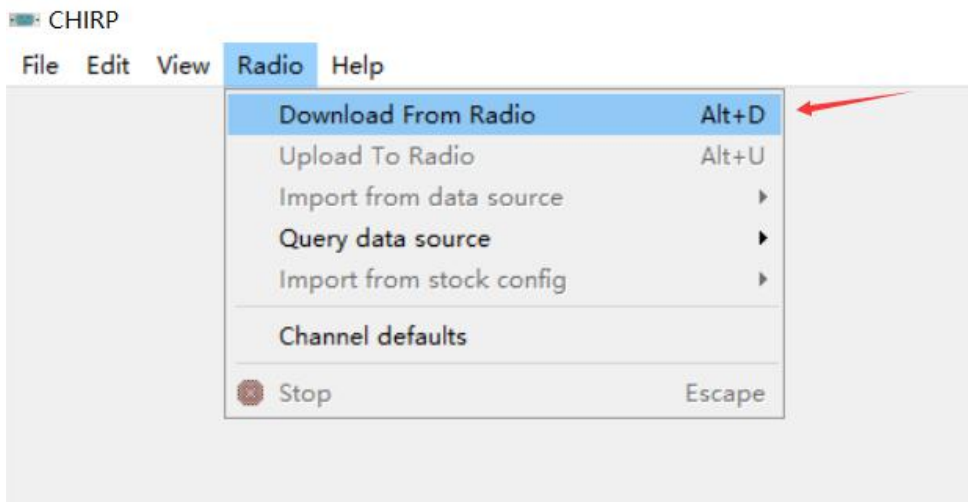


The screenshot shows a software window with a menu bar (File(F), Programmable(P), Setting(S), Help(H)) and a toolbar with icons for New, Open, Save, Read, and Write. The 'Write' button is highlighted with a red arrow. Below the toolbar are various settings: Password, New Password, SQL (3), Side Key (Monitor), TOT[s] (120), Scan (OFF), Rx Emergency (OFF), Voice SW (ON), Voice Select (English), Battery Save (ON), Beep (ON), High Vol Inhibit TX (checked), Low Vol Inhibit TX (checked), VOX (unchecked), Rx Disable Vox (unchecked), and Vox Gain (1). A 'Write' dialog box is open in the foreground, showing a 'Start' button and a 'Cancel' button. The dialog box also contains a table with columns: CH., Rx Freq., T, BandWide, ScanAdd, and BusyLock.

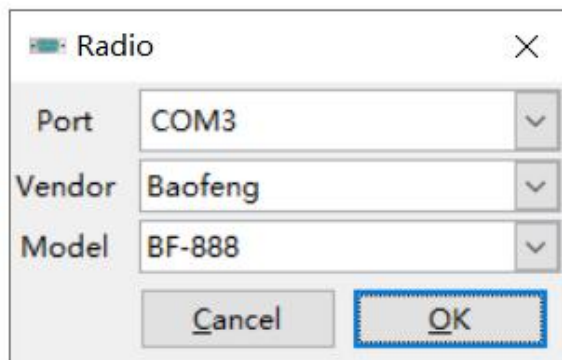
| CH. | Rx Freq. | T | BandWide | ScanAdd | BusyLock |
|-----|-----------|-----------|----------|---------|----------|
| 1 | 462.56250 | 462.56250 | NARROW | ON | OFF |
| 2 | 462.58750 | 462.58750 | NARROW | ON | OFF |
| 3 | 462.61250 | 462.61250 | NARROW | ON | OFF |
| 4 | 462.63750 | 462.63750 | NARROW | ON | OFF |
| 5 | 462.66250 | 462.66250 | NARROW | ON | OFF |

4.TD-V2 Chirp Software Programming Process

1) Open the CHIRP software (Latest Version), click "Download From Radio" under "Radio"



2) Select the corresponding cable driver port, and select Model "BF-888" under Vendor "Baofeng", then click "OK" to read the radio



3) And you will come to the page of Memories, in which you can adjust the limited parameters .

CHIRP

File Edit View Radio Help

Baofeng BF-888: (Untitled)*

Memories Memory Range: Refresh Special Channels Show Empty Properties

| Settings | Loc | Frequency | Tone Mode | Tone | ToneSql | DTCS Code | DTCS Rx Code | DTCS Pol | Cross Mode | Duplex | Offset | Mode | Power | Skip |
|----------|-----|------------|-----------|------|---------|-----------|--------------|----------|------------|--------|--------|------|-------|------|
| | 1 | 462.562500 | (None) | | | | | | | (None) | | FM | High | S |
| | 2 | 462.587500 | (None) | | | | | | | (None) | | FM | High | S |
| | 3 | 462.612500 | (None) | | | | | | | (None) | | FM | High | S |
| | 4 | 462.637500 | (None) | | | | | | | (None) | | FM | High | S |
| | 5 | 462.662500 | (None) | | | | | | | (None) | | FM | High | S |
| | 6 | 462.687500 | (None) | | | | | | | (None) | | FM | High | S |
| | 7 | 462.712500 | (None) | | | | | | | (None) | | FM | High | S |
| | 8 | 467.562500 | (None) | | | | | | | (None) | | FM | High | S |
| | 9 | 467.587500 | (None) | | | | | | | (None) | | FM | High | S |
| | 10 | 467.612500 | (None) | | | | | | | (None) | | FM | High | S |
| | 11 | 467.637500 | (None) | | | | | | | (None) | | FM | High | S |
| | 12 | 467.662500 | (None) | | | | | | | (None) | | FM | High | S |
| | 13 | 467.687500 | (None) | | | | | | | (None) | | FM | High | S |

4)Then if you switch to the page of Settings, you can adjust the limited parameters(For the explanation of Voice prompt, Scan, VOX, Squelch, etc.)

CHIRP

File Edit View Radio Help

Baofeng BF-888: (Untitled)*

Memories Settings

Basic Settings

Voice prompt: ☒ Enabled

Voice language: English

Scan: ☒ Enabled

Scan mode: Time

VOX: ☐ Enabled

VOX level:

Inhibit VOX on receive: ☒ Enabled

Low voltage inhibit transmit: ☒ Enabled

High voltage inhibit transmit: ☒ Enabled

Alarm: ☐ Enabled

FM function: ☒ Enabled

Beep: ☒ Enabled

Battery saver: ☒ Enabled

Squelch level:

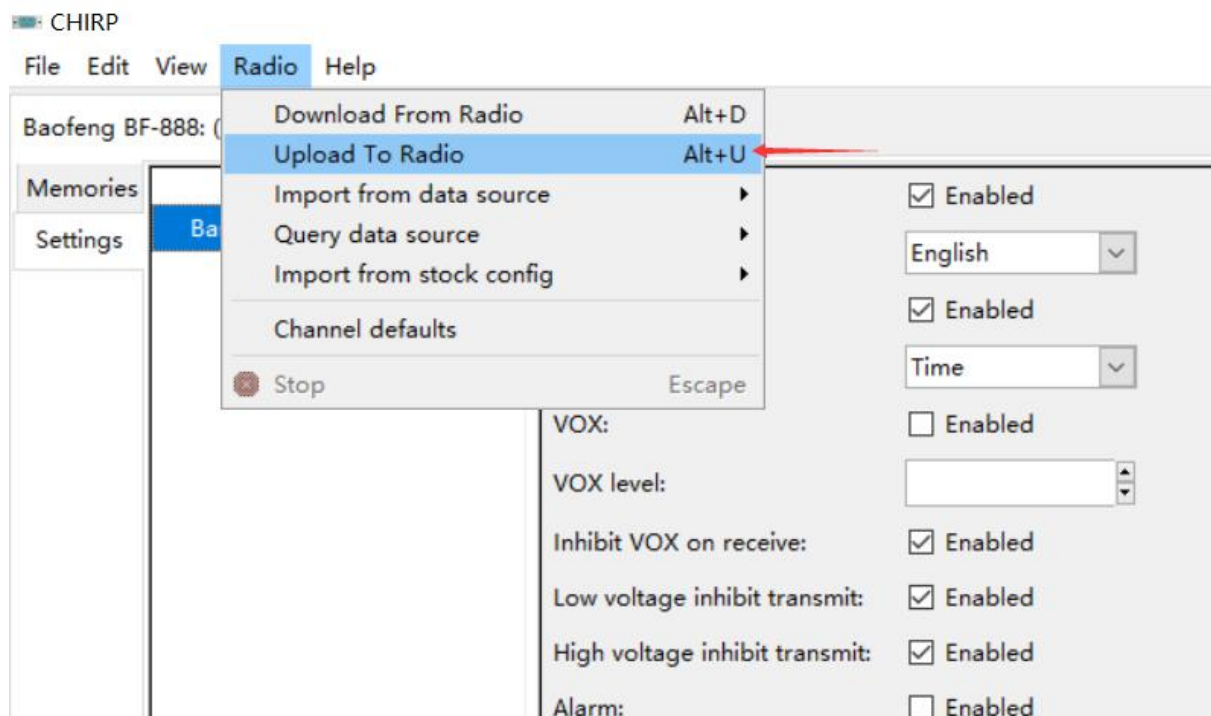
Side key function: Alarm

Timeout timer: 180 seconds

| Name | Meaning | Settings | Description |
|-------------------|-----------------------------|----------------------------------|---|
| Voice prompt | | Enabled/Off | Switch voice prompts |
| Voice language | | English/Chinese | Switch the language |
| Scan | | Enabled/Off | In the scan mode, whether add the channel to the scan list. |
| VOX level | Voice operated TX | 1-5 | When enabled it is not necessary to push the [PTT] button on the transceiver. Adjust the gain level to an appropriate sensitivity to allow smooth transmission. |
| Squelch level | | 0-9 | Mutes the speaker of the transceiver in the absence of a strong signal. Squelch is either 0 or 1-9 levels. The higher level, the stronger the signal must be to in-mute the speaker. |
| Alarm | | Enabled/Off | |
| FM function | | Enabled/Off | |
| Beep | | Enabled/Off | |
| Battery saver | | Enabled/Off | |
| Side Key Function | | Off/Monitor/Transmit Power/Alarm | You can customize the function of the Side Key |
| Timeout timer | Transmission time-out timer | Off/30-300s | This feature provides a limits transmission time to a programmed value. This will promote battery conservation by not allowing you to make excessively long-time transmissions and in the event of a stuck PTT switch, it can prevent interference to other users as well as battery depletion. |

5) All the modification will be saved by clicking "Upload To Radio" under "Radio".

Then you can check the settings you modified after reboot the radio.



*If you have any problem with the TID TD-V2 radio using or programming, please don't hesitate to contact us via support: walkietalkiesoftware.com. Also visit our Facebook pages ([TIDRADIO](#)) for more help. It's always our honor to help.