

BaoFeng BF-88A Programming Guide

INTRODUCTION

BaoFeng BF-88A is a UHF radio. It offers 16 channels, you can add or remove channels from scanning list and give channels alphanumeric names via programming with a computer. This Programming Guide will help you get a quick start to program the radio

*If you have any problem with the BF-88A radio using or programming, please don't hesitate to contact us via support: walkietalkiesoftware.com. Also visit our Facebook pages ([TIDRADIO](#)) for more help. It's always our honor to help.

Contents

1. Frequency Chart.....	2
2. Preparation before Programming.....	2
3. Manufacture Software Programming Process	6
4. Chirp Software Programming Process.....	10

1. Frequency Chart

16 Modifiable FRS Two Way Channels (Channels 1-16) - Receive and Transmit.

CH.	Rx Freq.	Tx Freq.	Tx Power	Type of radio
1	462.56250	462.56250	HIGH	FRS
2	462.58750	462.58750	HIGH	FRS
3	462.61250	462.61250	HIGH	FRS
4	462.63750	462.63750	HIGH	FRS
5	462.66250	462.66250	HIGH	FRS
6	462.68750	462.68750	HIGH	FRS
7	462.71250	462.71250	HIGH	FRS
8	462.55000	462.55000	Low	FRS
9	462.57500	462.57500	Low	FRS
10	462.60000	462.60000	Low	FRS
11	462.62500	462.62500	Low	FRS
12	462.65000	462.65000	Low	FRS
13	462.67500	462.67500	Low	FRS
14	462.70000	462.70000	Low	FRS
15	462.72500	462.72500	HIGH	FRS
16	462.56250	462.56250	HIGH	FRS

2.Preparation before Programming

2.1. Computer System Requirements

Manufacture Programming Software Operating System: Windows 7, Windows 8 and Windows 10

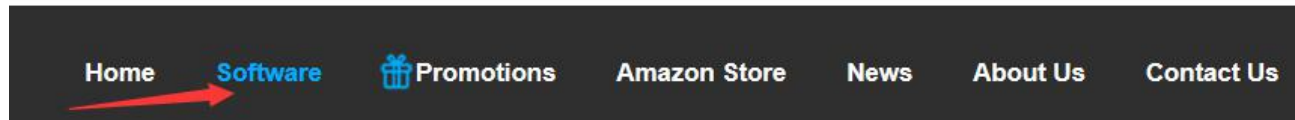
CHIRP Programming Software Operating System: Windows 7\8\10,

Windows 2000, Mac OS, Linux

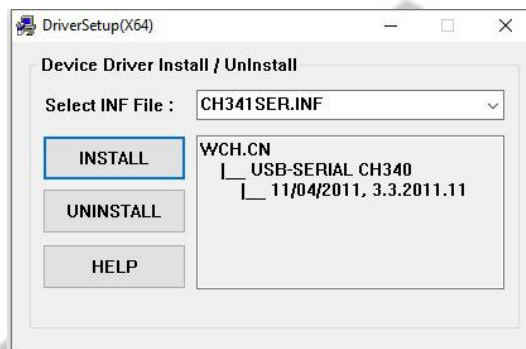
2.2. Programming Cable

A.USB programming cable - The driver should be installed before programming.

Driver download link:walkietalkiesoftware.com



- 1) Find the corresponding driver of the system.
- 2) Click and wait for the download.
- 3) Click install and wait for the installation



Come with the CH340 USB programming cable is only suitable for WINDOWS system

B. If you use an FTDI cable, it does not need to be installed with a driver. You can just plug in and use directly.

FTDI chip programming cable suitable for Mac os,Windows system.

You can search [B08CB5KT5M](#) on Amazon to purchase a FTDI cable if you do not have one.

Product link:

https://www.amazon.com/TIDRADIO-Programming-BaoFeng-Retevis-Radioddy/dp/B08CB5KT5M/ref=sr_1_1?dchild=1&keywords=B08CB5KT5M&qid=1627973909&sr=8-1

1) If your computer did not automatically install the driver, you will need to update the driver to the latest driver

Download the latest FTDI driver at : <https://ftdichip.com/drivers/vcp-drivers/>

2.3. Software Download & Install

1) Turn on the computer, check if your computer system meets the requirements.

2) Download the manufacture software on walkietalkiesoftware.com or CHIRP software on <https://chirp.danplanet.com/>

3) Install the programming software

2.4. Connect your Walkie Talkie with Computer

1) USB programming cable connects with the computer end.

2) Connect the other end of the cable with your walkie talkie.

3) When both ends have been connected, turn on your radio. Make sure it has enough power during the programming procedure.

ERROR: Failed to Connect to the transceiver (Radio)

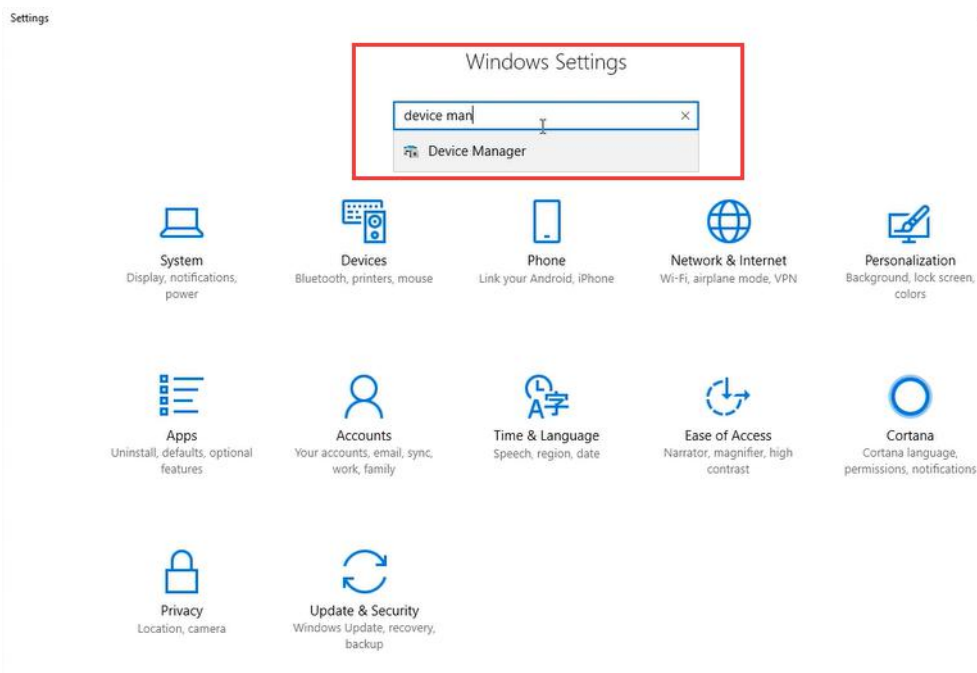
If it says it cannot connect to the radio - this means the cable is working but is not installed correctly into the radio.

Items to Check:

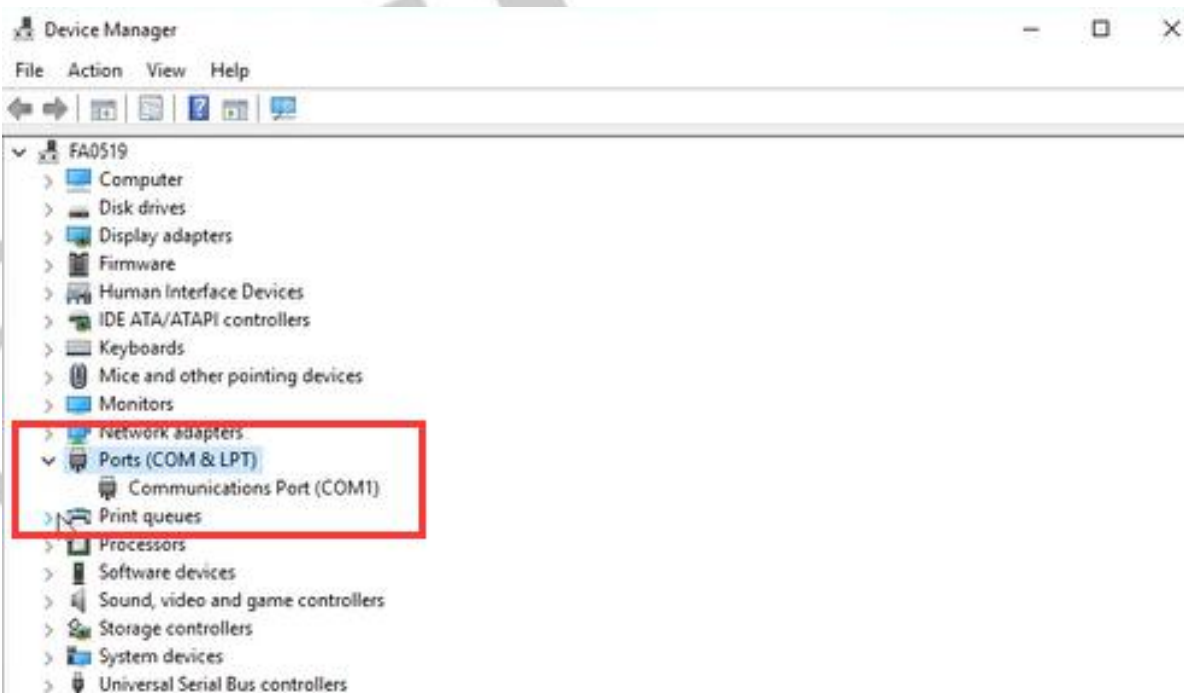
- Radio is turned on
- The cable is FULLY inserted (it can be deceiving but there is a double click)
- Hold the cable into the radio - some radios might not make contact without pressure
- A way to cheat - dampen the pins of the cable before pushing it into the radio. This will give a solid contact

2.5.How to choose your port?

1)Get into “Window Setting”, then search “Device Manager”.



2)Open “Device Manager”, and unfold Port (COM & LPT) to check the existing port.



3)Come with CH340 programming cable port is **USB-SERIAL CH340 (COM?)**



端口 (COM 和 LPT)



USB-SERIAL CH340 (COM6)

4)FTDI programming cable port is **USB Serial Port (COM?)**

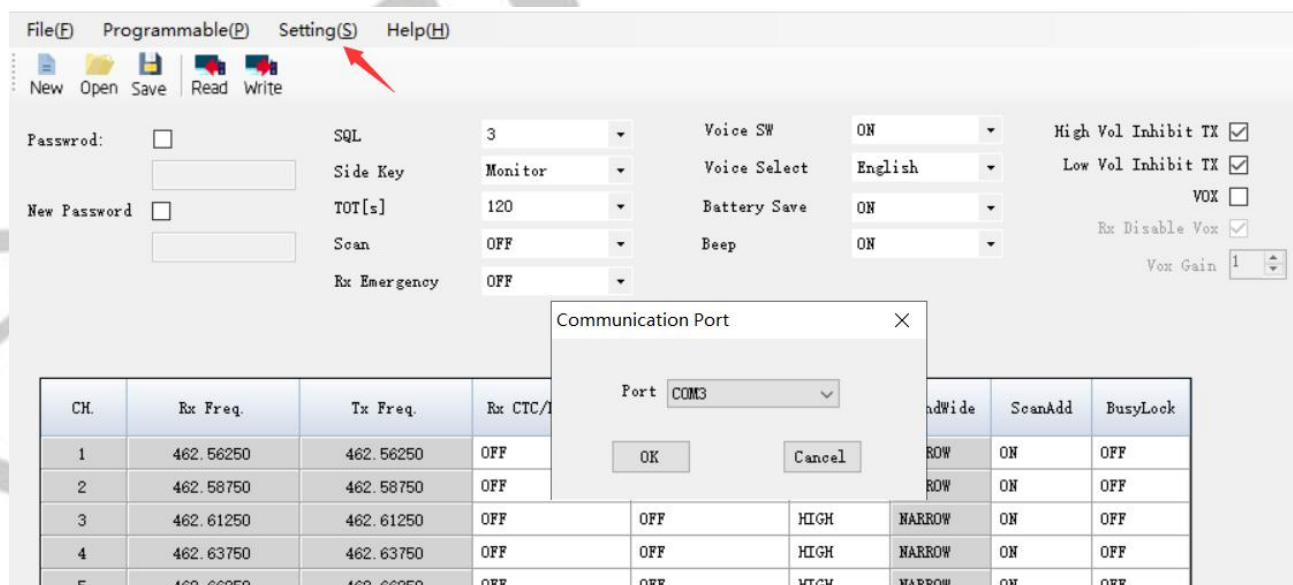
端口 (COM 和 LPT)



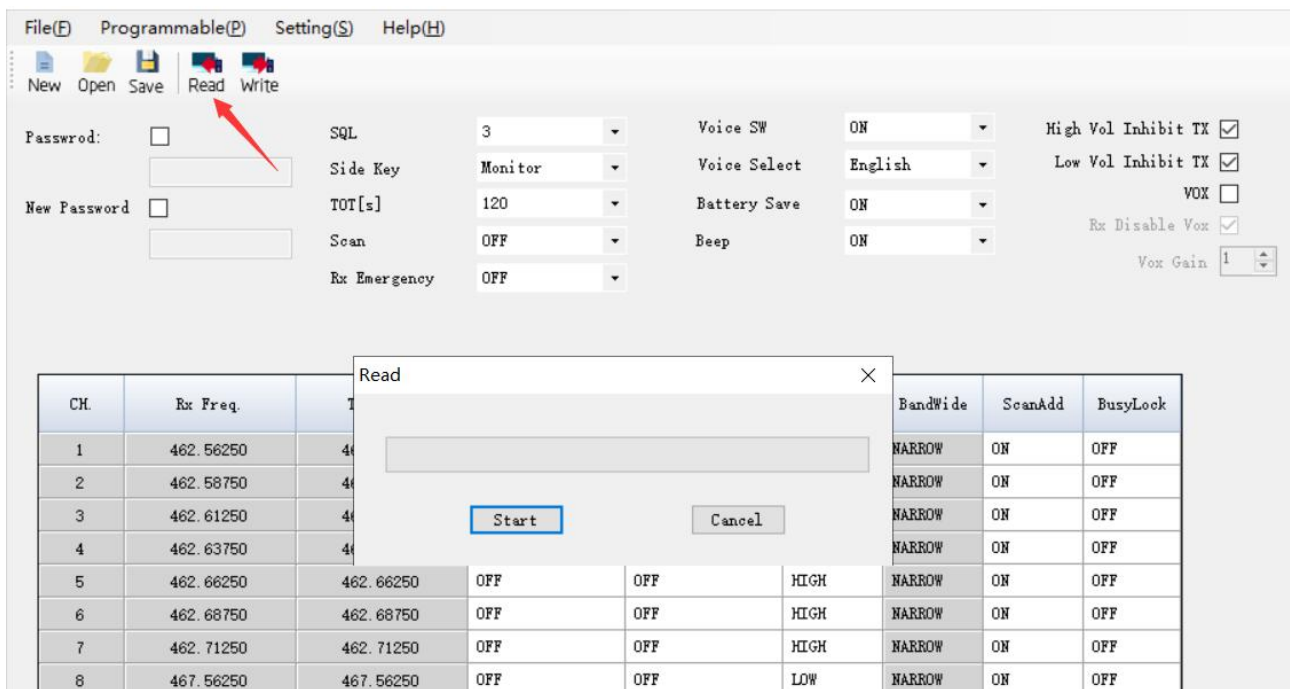
USB Serial Port (COM3)

3.BF-88A Manufacture Software Programming Process

1)Download and open the manufacture software. Click "Setting → Communication Port" and then Confirm the port the same as the port viewed by Device Manager, then click the "OK" button.



2) Click the "Read" button, then click "Start" and ready to read the data from your radio.(Make sure the radio is turned on)



3) You will come to the parameter page and adjust the parameters. According to the US FCC rule, FRS radio cannot modify the frequency and bandwidth.

CH.	Rx Freq.	Tx Freq.	Rx CTC/DCS Code	Tx CTC/DCS Code	Tx Power	BandWide	ScanAdd	BusyLock
1	462.56250	462.56250	OFF	OFF	HIGH	NARROW	ON	OFF
2	462.58750	462.58750	OFF	OFF	HIGH	NARROW	ON	OFF
3	462.61250	462.61250	OFF	OFF	HIGH	NARROW	ON	OFF
4	462.63750	462.63750	OFF	OFF	HIGH	NARROW	ON	OFF

Channel Information

The BF-88A radio has 16 channels, you can edit the channel number and channel information according to your needs. The following is an introduction to each term.

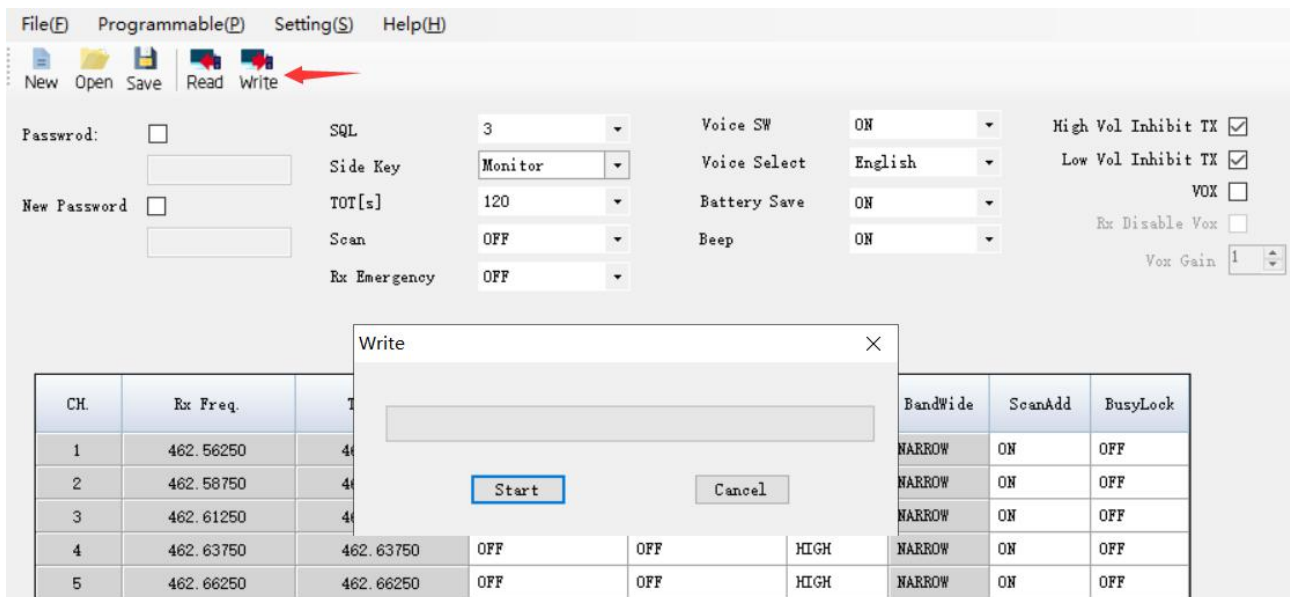
Name	Meaning	Setting	Description
RX CTC/DCS Code	Receiving CTCSS/DCS	Refer to the DCS table and CTCSS table in the manual.	Mutes the speaker of the transceiver in the absence of a specific low level digital signal. If the station you are listening to does not transmit this specific signal,you will not hear anything.
TX CTC/DCS Code	Transmitting CTCSS/DCS	Refer to the DCS table and CTCSS table in the manual.	Transmits a specific low-level digital signal to unlock the squelch of a distant receiver (usually a repeater).
TX POWER	Transmit power	HIGH/LOW	High power:2W Low power:0.5W
Busy Lockout	Busy Channel Lockout	OFF/ON	ON: If the channel is occupied, when you press the [PTT] key on this channel, the radio will make a beep tone and will not transmit any signal. OFF: No matter if the channel is occupied, the radio will transmit the signal when you press the [PTT] key.
Scan add		OFF/ON	In the scan mode, whether add the channel to the scan list. ON: the channel is added to scan list; OFF: the channel cannot be scanned.

4) You can adjust the parameters (VOX Function, Squelch, Side Key, Voice Prompt, Scan, etc.)

Basic Setting

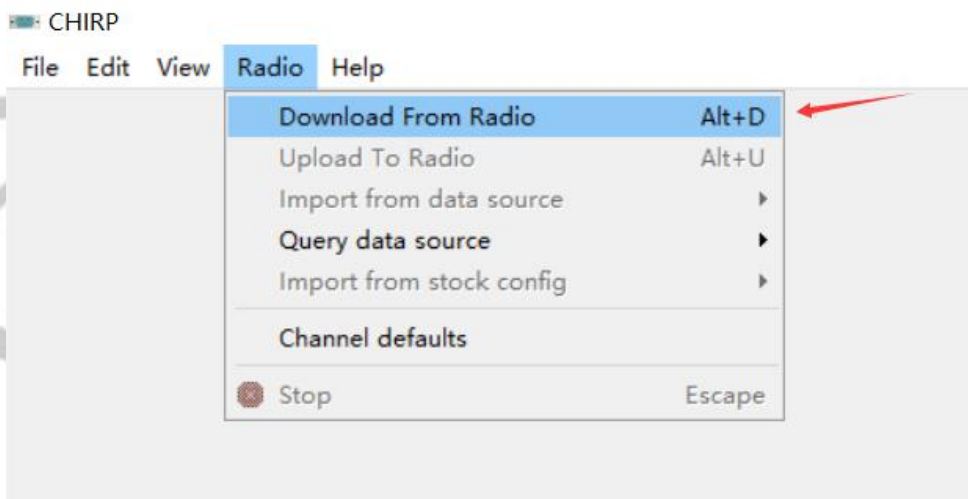
Name	Meaning	Settings	Description
TOT[s]	Transmission time-out timer	Off/30-300s	This feature provides a limits transmission time to a programmed value. This will promote battery conservation by not allowing you to make excessively long-time transmissions and in the event of a stuck PTT switch, it can prevent interference to other users as well as battery depletion.
SQL	Squelch Level	0-9	Mutes the speaker of the transceiver in the absence of a strong signal. Squelch is either 0 or 1-9 levels. The higher level, the stronger the signal must be to in-mute the speaker.
VOX	Voice operated TX	1-5	When enabled it is not necessary to push the [PTT] button on the transceiver. Adjust the gain level to an appropriate sensitivity to allow smooth transmission.
Voice SW		OFF\ON	Switch voice prompts
Side Key	Off/Mon/Alarm/Power		You can customize the function of the Side Key
Scan		OFF/ON	In the scan mode, whether add the channel to the scan list. ON : the channel is added to scan list; OFF : the channel cannot be scanned

5) Finally, all the modification will be saved by clicking the "Write" button, then clicking the "Start" button on the popup. And you can check the setting you modified after reboot the radio.

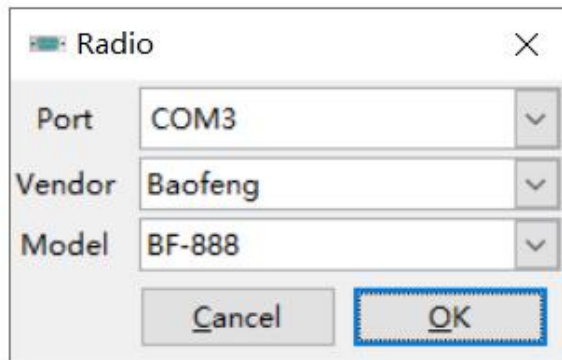


4.BF-88A Chirp Software Programming Process

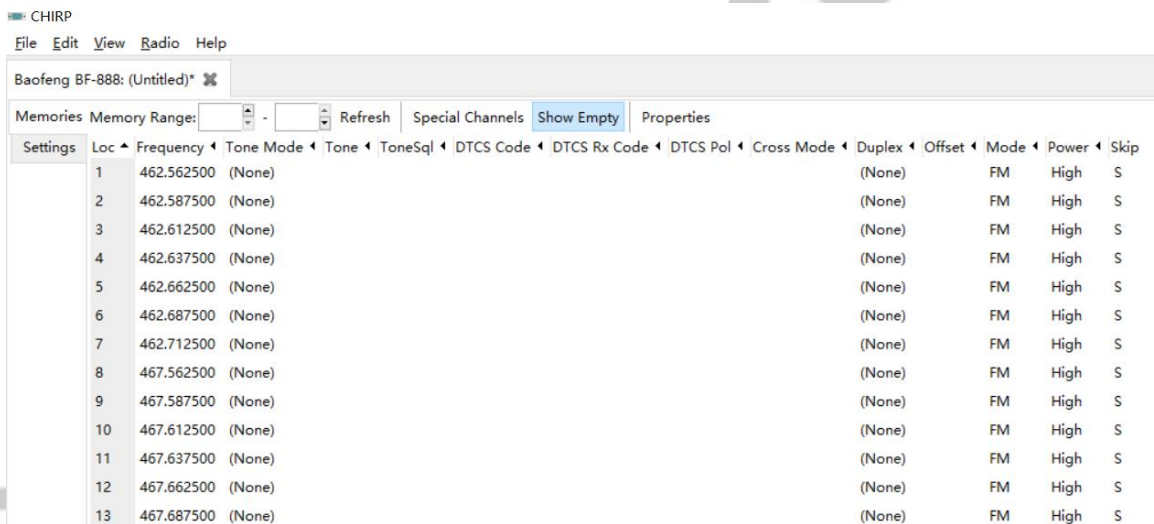
1) Open the CHIRP software (Latest Version), click "Download From Radio" under "Radio"



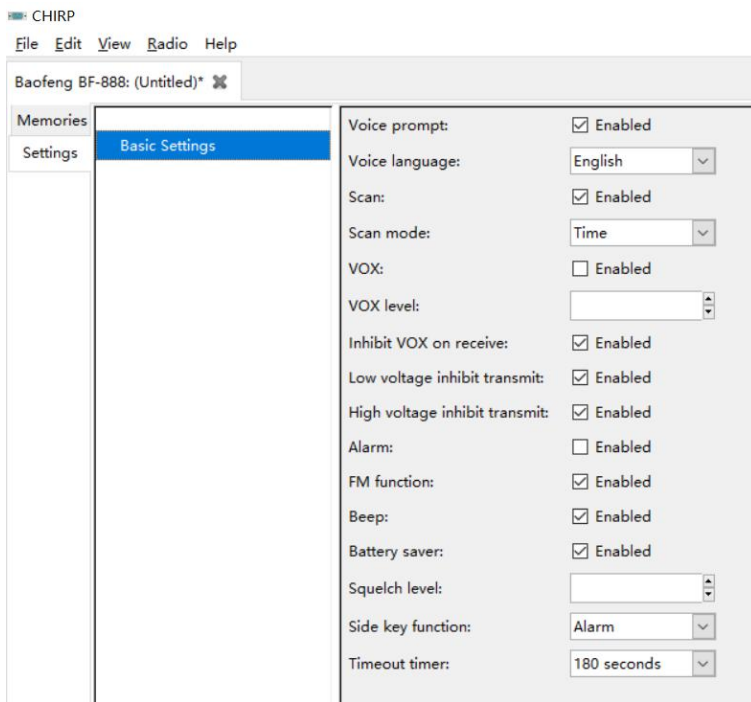
2) Select the corresponding cable driver port, and select Model "BF-888" under Vendor "Baofeng", then click "OK" to read the radio



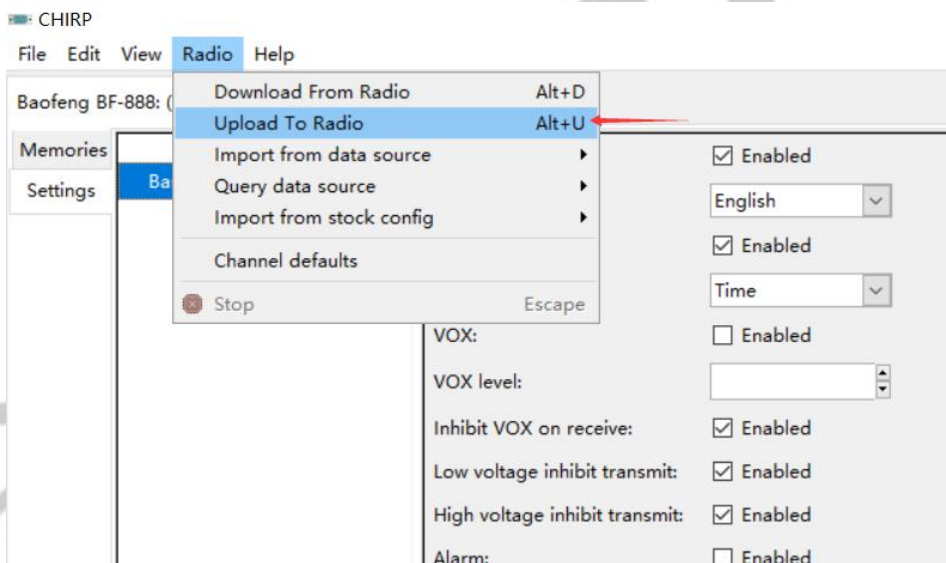
3) And you will come to the page of Memories, in which you can adjust the limited parameters



4) Then if you switch to the page of Settings, you can adjust the limited parameters (For the explanation of VOX Function, Squelch, Voice Prompt, Scan. Please refer to introduction above)



5) All the modification will be saved by clicking "Upload To Radio" under "Radio". Then you can check the settings you modified after reboot the radio.



*If you have any problem with the BaoFeng BF-88A radio using or programming, please don't hesitate to contact us via support: walkietalkiesoftware.com. Also visit our Facebook pages ([TIDRADIO](#)) for more help. It's always our honor to help.