

# TIDRADIO TD-66 Programming Guide

## INTRODUCTION

TD-66 is a UHF radio. It offers 16 channels, you can add or remove channels from scanning list and give channels alphanumeric names via programming with a computer. This Programming Guide will help you get a quick start to program the radio.

\*If you have any problem with the TD-66 radio using or programming, please don't hesitate to contact us via support: [walkietalkiesoftware.com](http://walkietalkiesoftware.com). Also visit our Facebook pages ([TIDRADIO](#)) for more help. It's always our honor to help.

## Contents

1. Frequency Chart.....	2
2. Preparation before Programming.....	2
3. Manufacture Software Programming Process .....	7

## 1. Frequency Chart

16 Modifiable Two Way Channels (Channels 1-16) - Receive and Transmit.

CH.	RX Freq	TX Freq	TX Power	CH.	RX Freq	TX Freq	TX Power
1	462.56250	462.56250	High	9	467.58750	467.58750	High
2	462.58750	462.58750	High	10	467.61250	467.61250	High
3	462.61250	462.61250	High	11	467.63750	467.63750	High
4	462.63750	462.63750	High	12	467.66250	467.66250	High
5	462.66250	462.66250	High	13	467.68750	467.68750	High
6	462.68750	462.68750	High	14	467.71250	467.71250	High
7	462.71250	462.71250	High	15	462.55000	462.55000	High
8	467.56250	467.56250	High	16	462.57500	462.57500	High

## 2.Preparation before Programming

### 2.1. Computer System Requirements

Manufacture Programming Software Operating System: Windows 7, Windows 8 and Windows 10

### 2.2. Programming Cable

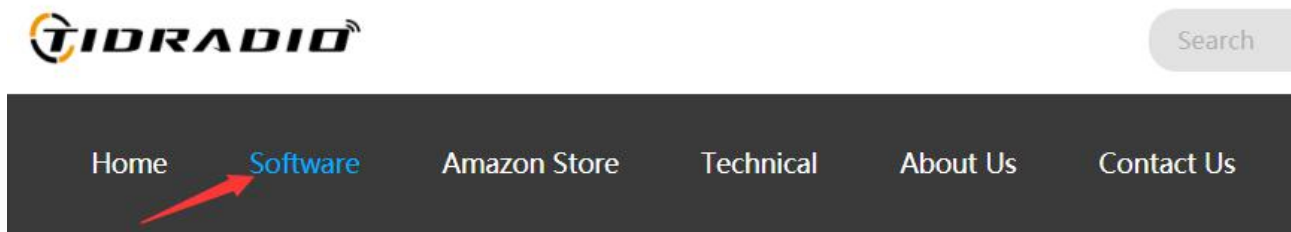
A.CH340 programming cable - The driver should be installed before programming.

You can search [B08QCW5CZJ](#) on Amazon to purchase a CH340 programming cable if you do not have one.

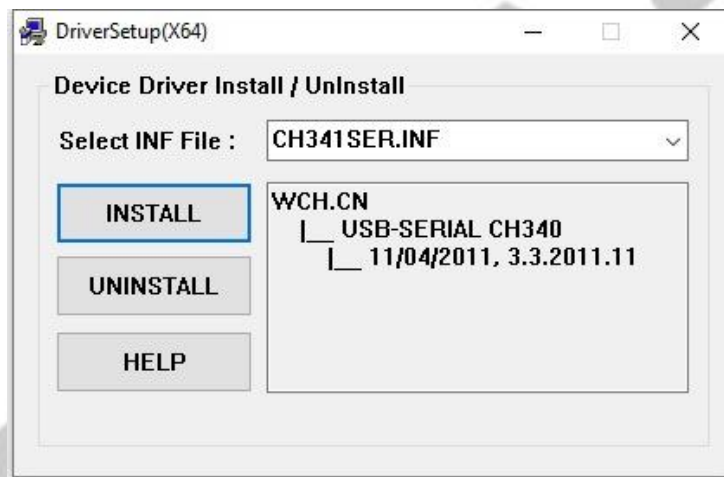
Product link:

[https://www.amazon.com/TIDRADIO-Driver-Programming-Portable-Radios/dp/B08QCW5CZJ/ref=sr\\_1\\_1?dchild=1&keywords=B08QCW5CZJ&qid=1627973624&sr=8-1](https://www.amazon.com/TIDRADIO-Driver-Programming-Portable-Radios/dp/B08QCW5CZJ/ref=sr_1_1?dchild=1&keywords=B08QCW5CZJ&qid=1627973624&sr=8-1)

Driver download link: [walkietalkiesoftware.com](http://walkietalkiesoftware.com)



- 1) Find the corresponding driver of the system.
- 2) Click and wait for the download.
- 3) Click install and wait for the installation.



B. FTDI programming cable, it does not need to be installed with a driver. You can just plug in and use directly.

You can search [B08CB5KT5M](#) on Amazon to purchase a FTDI cable if you do not have one.

Product link:

[https://www.amazon.com/TIDRADIO-Programming-BaoFeng-Retevis-Radioddy/dp/B08CB5KT5M/ref=sr\\_1\\_1?dchild=1&keywords=B08CB5KT5M&qid=1627973909&sr=8-1](https://www.amazon.com/TIDRADIO-Programming-BaoFeng-Retevis-Radioddy/dp/B08CB5KT5M/ref=sr_1_1?dchild=1&keywords=B08CB5KT5M&qid=1627973909&sr=8-1)

1) If your computer did not automatically install the driver, you will need to update the driver to the latest version.

Download the latest FTDI driver at : <https://ftdichip.com/drivers/vcp-drivers/>

### **2.3. Software Download & Install**

- 1) Turn on the computer, check if your computer system meets the requirements.
- 2) Download the manufacture software on [walkietalkiesoftware.com](http://walkietalkiesoftware.com)
- 3) Install the programming software.

### **2.4. Connect your Walkie Talkie with Computer**

- 1) USB programming cable connects with the computer end.
- 2) Connect the other end of the cable with your walkie talkie.
- 3) When both ends have been connected, turn on your radio. Make sure it has enough power during the programming procedure.

### **ERROR: Failed to Connect to the transceiver (Radio)**

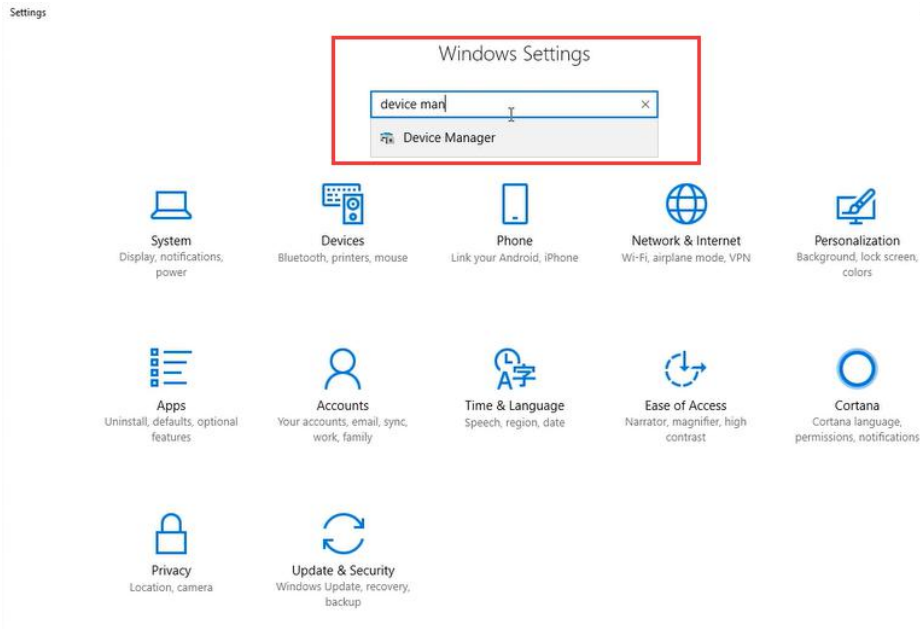
If it says it cannot connect to the radio - this means the cable is working but is not installed correctly into the radio.

#### **Items to Check:**

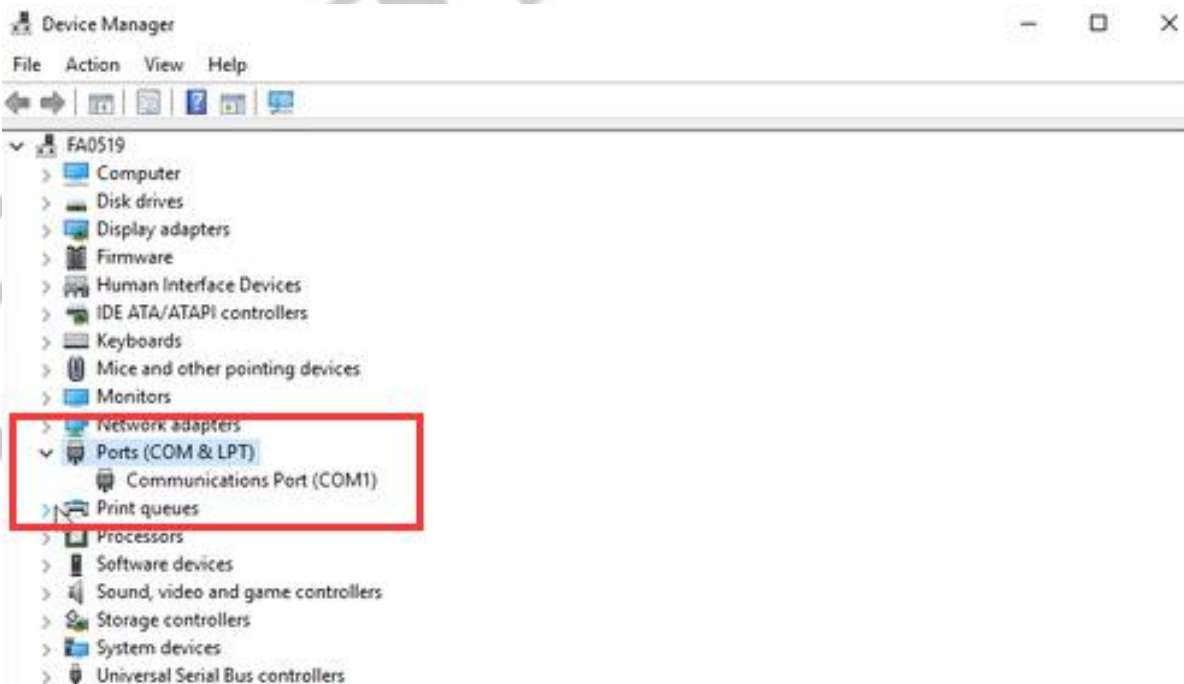
- Radio is turned on
- The cable is FULLY inserted (it can be deceiving but there is a double click)
- Hold the cable into the radio - some radios might not make contact without pressure
- A way to cheat - dampen the pins of the cable before pushing it into the radio. This will give a solid contact

## 2.5.How to choose your port?

1)Get into “Window Setting”, then search “Device Manager”.



2)Open “Device Manager”, and unfold Port (COM & LPT) to check the existing port.



3)CH340 programming cable port is **USB-SERIAL CH340 (COM?)**



端口 (COM 和 LPT)



USB-SERIAL CH340 (COM6)

4)FTDI programming cable port is **USB Serial Port (COM?)**



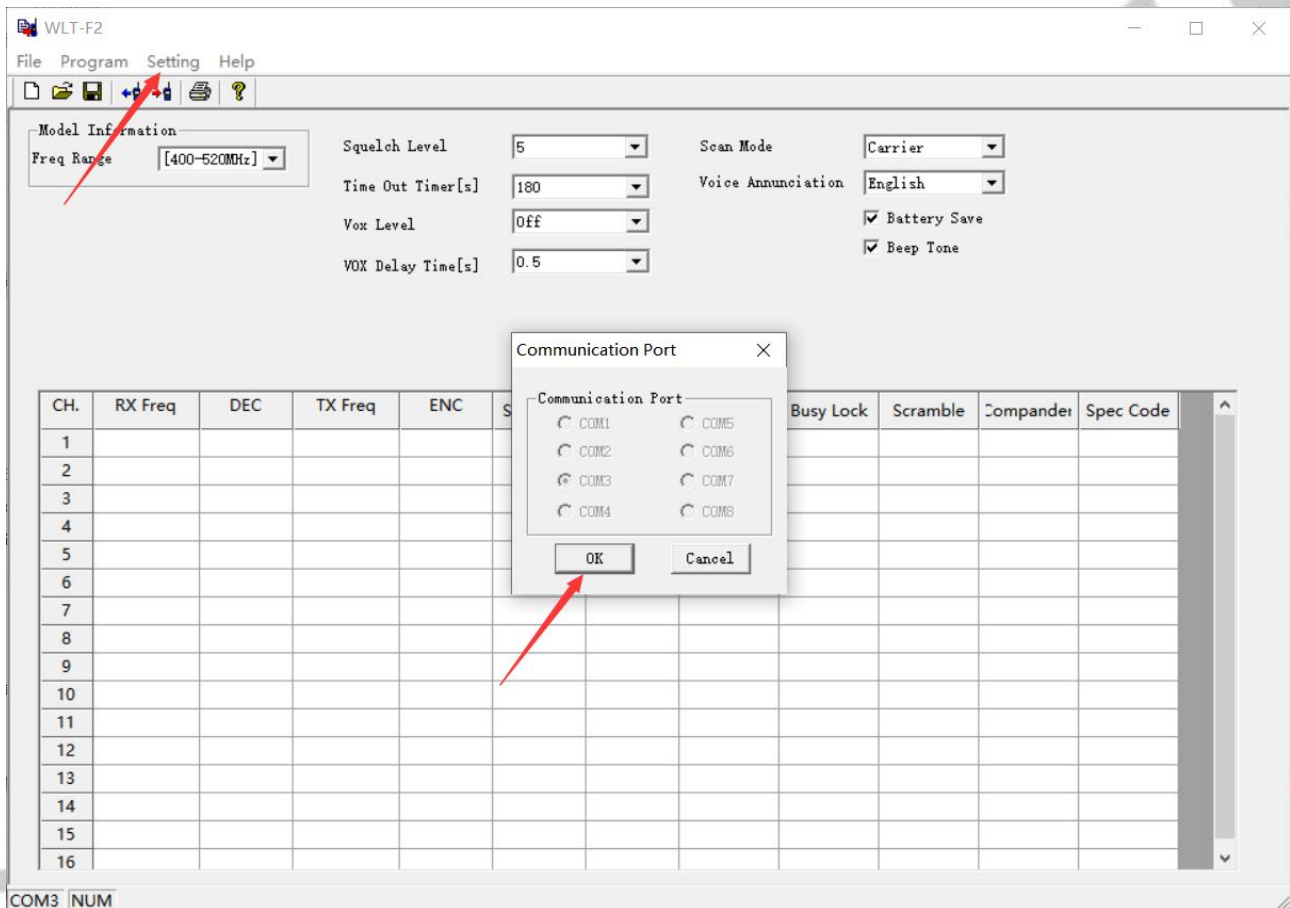
端口 (COM 和 LPT)



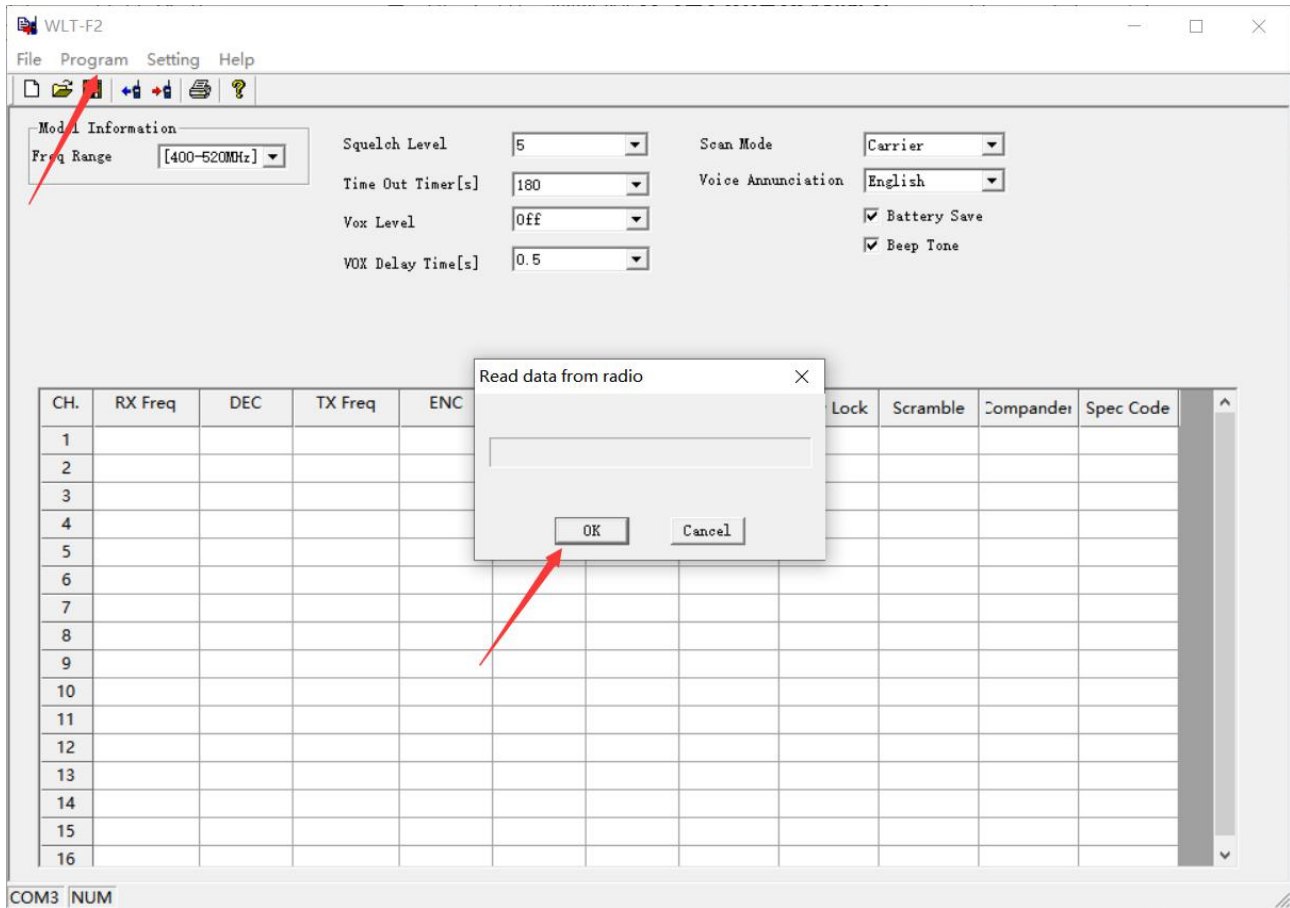
USB Serial Port (COM3)

### 3.Manufacture Software Programming Process

1) Download and open the manufacture software. Click "Setting → Communication Port" and then Confirm the port the same as the port viewed by Device Manager, then click the "OK" button.



2) Click the "Program→Read from Radio" button, then click "OK" below and ready to read the data from your radio.( Make sure the radio is turned on)





3) You will come to the parameter page and adjust the parameters.

WLT-F2

File Program Setting Help

Model Information

Freq Range [400-520MHz]

Squelch Level 4

Time Out Timer[s] 60

Vox Level Off

VOX Delay Time[s] 0.5

Scan Mode Carrier

Voice Annunciation English

☒ Battery Save

☒ Beep Tone

CH.	RX Freq	DEC	TX Freq	ENC	Scan Add	W/N	TX Power	Busy Lock	Scramble	Compander	Spec Code
1	462.56250	Off	462.56250	Off	Yes	Wide	High	Off	No	No	Off
2	462.58750	Off	462.58750	Off	Yes	Wide	High	Off	No	No	Off
3	462.61250	Off	462.61250	Off	Yes	Wide	High	Off	No	No	Off
4	462.63750	Off	462.63750	Off	Yes	Wide	High	Off	No	No	Off
5	462.66250	Off	462.66250	Off	Yes	Wide	High	Off	No	No	Off
6	462.68750	Off	462.68750	Off	Yes	Wide	High	Off	No	No	Off
7	462.71250	Off	462.71250	Off	Yes	Wide	High	Off	No	No	Off
8	467.56250	Off	467.56250	Off	Yes	Wide	High	Off	No	No	Off
9	467.58750	Off	467.58750	Off	Yes	Wide	High	Off	No	No	Off
10	467.61250	Off	467.61250	Off	Yes	Wide	High	Off	No	No	Off
11	467.63750	Off	467.63750	Off	Yes	Wide	High	Off	No	No	Off
12	467.66250	Off	467.66250	Off	Yes	Wide	High	Off	No	No	Off
13	467.68750	Off	467.68750	Off	Yes	Wide	High	Off	No	No	Off
14	467.71250	Off	467.71250	Off	Yes	Wide	High	Off	No	No	Off
15	462.55000	Off	462.55000	Off	Yes	Wide	High	Off	No	No	Off
16	462.57500	Off	462.57500	Off	Yes	Wide	High	Off	No	No	Off

COM6 NUM

## Channel Information

The TD-66 radio has 16 channels, you can edit the channel number and channel information according to your needs. The following is an introduction to each term.

Name	Meaning	Setting	Description
RX Freq	Receiving frequency	UHF:400-520MHz	
DEC	Receiving CTCSS/DCS	Refer to the DCS table and CTCSS table in the manual.	Mutes the speaker of the transceiver in the absence of a specific low level digital signal. If the station you are listening to does not transmit this specific signal, you will not hear anything.
TX Freq	Transmitting frequency	UHF:400-520MHz	

ENC	Receiving CTCSS/DCS	Refer to the DCS table and CTCSS table in the manual.	Mutes the speaker of the transceiver in the absence of a specific low level digital signal. If the station you are listening to does not transmit this specific signal, you will not hear anything.
Scan Add		Yes/No	In the scan mode, whether add the channel to the scan list. <b>Yes:</b> the channel is added to scan list; <b>No:</b> the channel cannot be scanned.
W/N	Channel bandwidth	Wide/Narrow	Wideband (25kHz bandwidth) Narrowband (12.5 kHz bandwidth).
TX POWER	Transmit power	High/Low	High power:2W Low power:0.5W
Busy Lock	Busy Channel Lockout	On/Off	<b>On:</b> If the channel is occupied, when you press the [PTT] key on this channel, the radio will make a beep tone and will not transmit any signal. <b>Off:</b> No matter if the channel is occupied, the radio will transmit the signal when you press the [PTT] key.
Scramble		Yes/No	Scrambles your voice so eavesdroppers will not understand your conversation. Open this function can protect the conversation privacy. (Notice: All device be set to work in the scrambled mode under same level).
Compander		Yes/No	The compander can effectively compress part of the transmitted set signal before transmitting it to the other end, and then expand the signal at the receiving end. Also can noise reduction which improves the sound clarity and reduces the static hissing sound between two transmitted. (Notice: If compander is selected "Yes", the other party also needs to selected "Yes" to talking )
Spec Code		On/Off	

1) You can adjust the parameters (Squelch, Time Out Timer[s], VOX Function, Scan Mode, etc.)

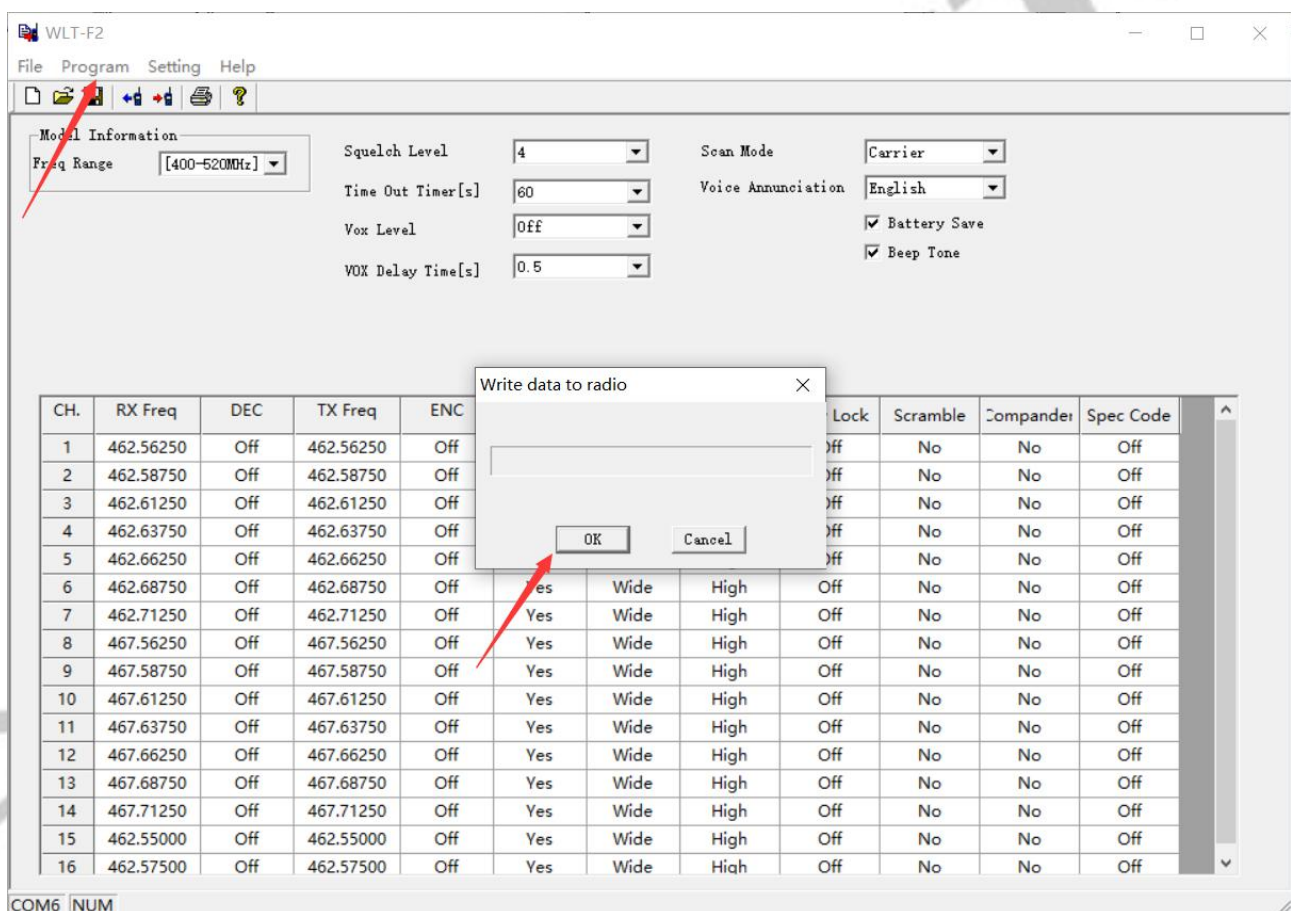


## Optional Features

Name	Meaning	Settings	Description
Squelch Level		0-9	Mutes the speaker of the transceiver in the absence of a strong signal. Squelch is either 0 or 1-9 levels. The higher level, the stronger the signal must be to in-mute the speaker.
Time out Timer[s]	Transmission time-out timer	Off/30-300s	This feature provides a limits transmission time to a programmed value. This will promote battery conservation by not allowing you to make excessively long-timetransmissions and in the event of a stuck PTT switch, it can prevent interference to other users as well as battery depletion.
Vox Level	Voice operated TX	Off/1-9	When enabled it is not necessary to push the [PTT] button on the transceiver. Adjust the gain level to an appropriate sensitivity to allow smooth transmission.
VOX Delay Time[s]		0.5-3.0	
Scan Mode		<b>Carrier:</b> Carrier Operation -Scanning Resume Method scanning will resume after the signal disappears <b>Time:</b> Time Operation - scanning will resume after a fixed time has passed	Scanning Resume Method

Voice Annunciation		None/Chinese/English	Switch voice prompts.
Battery Save			Turn on battery power saving.
Beep Tone			There will be a beep sound when powering on.

2) Finally, all the modification will be saved by clicking the "Program→Write to Radio" button, then clicking the "OK" button on the popup. And you can check the setting you modified after reboot the radio.



\*If you have any problem with the TIDRADIO TD-66 radio using or programming, please don't hesitate to contact us via support: [walkietalkiesoftware.com](http://walkietalkiesoftware.com). Also visit our Facebook pages ([TIDRADIO](#)) for more help. It's always our honor to help.