

TIDRADIO TD-H6 Programming Guide

INTRODUCTION

TIDRADIO TD-H6 is a dual-band (VHF, UHF) versatile amateur radio. It offers 128 channels, you can add or remove channels from scanning list and give channels alphanumeric names via programming with a computer. With the enhanced capabilities of the TD-H6 radio, this Programming Guide will help you get a quick start to program the radio.

*If you have any problem with the TD-H6 radio using or programming, please don't hesitate to contact us via support: walkietalkiesoftware.com. Also visit our Facebook pages ([TIDRADIO](#)) for more help. It's always our honor to help.

Contents

1. Preparation before Programming.....	2
2. Manufacture Software Programming Process	5
3. Chirp Software Programming Process.....	11

Preparation before Programming

1. Computer System Requirements

Manufacture Programming Software Operating System: Windows 7, Windows 8 and Windows 10

CHIRP Programming Software Operating System: Windows 7\8\10, Windows 2000 Mac OS, Linux

2 . FTDI Cable Use Guide

FTDI Programming Cable is Included, it does not need to be installed with a driver. You can just plug in and play directly.

FTDI Cable FAQ:

Q: How do I use this cable with my radio?

A: Plug in the cable to your computer and allow the computer to automatically install the drivers.

Q: Do I need to "back-date" or install a prolific driver?

A: No-those procedures found online are for counterfeit cables.

This cable will automatically install with the drivers on your computer.

Q: My computer did not automatically install the driver-now what?

A: Download the latest FTDI driver at :

bit.ly/driverfree

Q: I need help using the software

A: walkietalkiesoftware.com is an excellent resource site.

Also visit our Facebook pages ([TIDRADIO](#)) for more help.

ERROR: Failed to Connect to the transceiver (Radio)

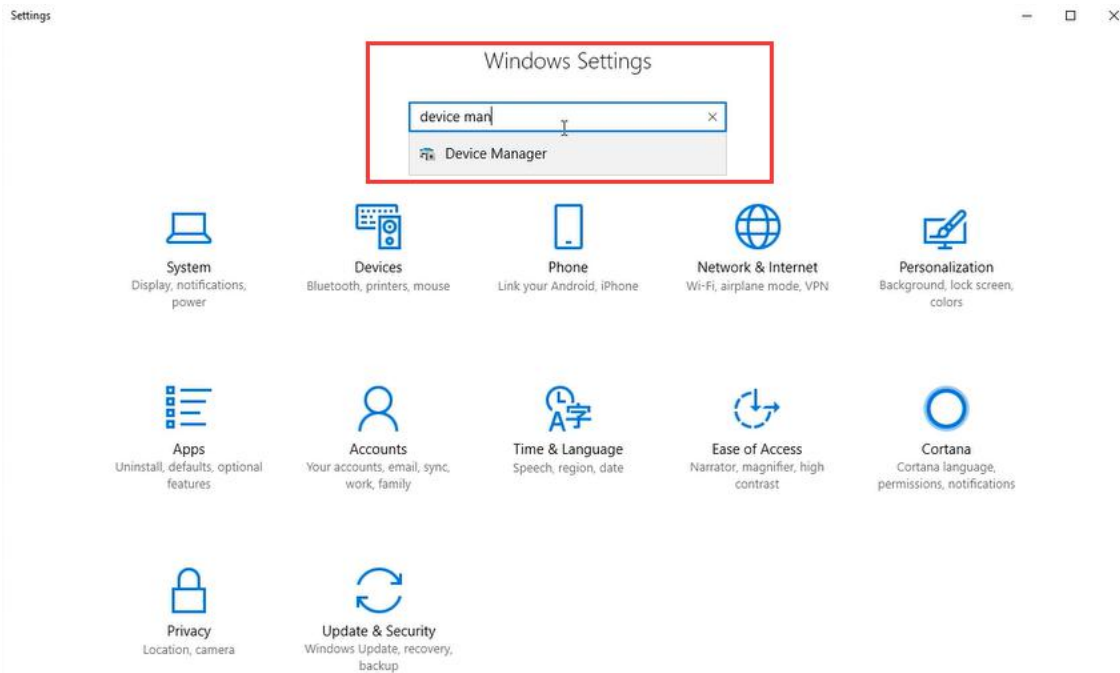
If it says it cannot connect to the radio - this means the cable is working but is not installed correctly into the radio.

Items to Check:

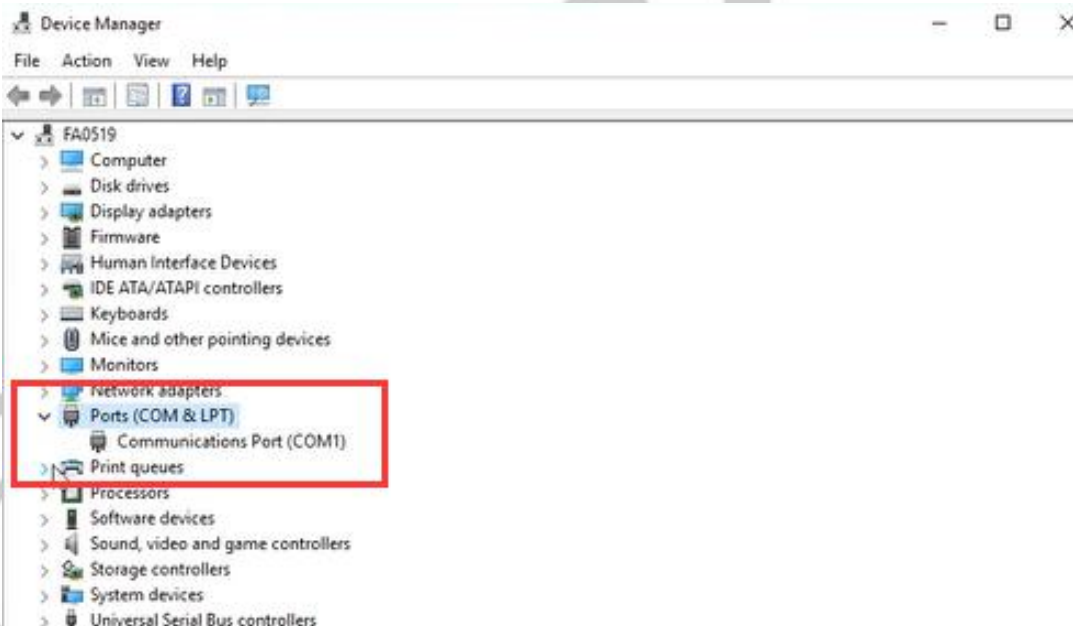
- Radio is turned on
- The cable is FULLY inserted (it can be deceiving but there is a double click)
- Hold the cable into the radio - some radios might not make contact without pressure
- A way to cheat - dampen the pins of the cable before pushing it into the radio. This will give a solid contact

WINDOWS TROUBLESHOOTING HELP:

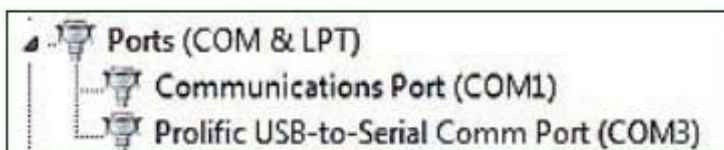
1. Get into "Windows Setting", then search "Device Manager".



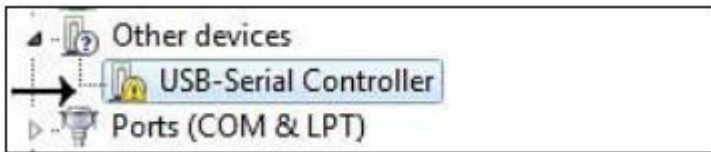
2. Open "Device Manager", and unfold Port (COM & LPT) to check the existing port.



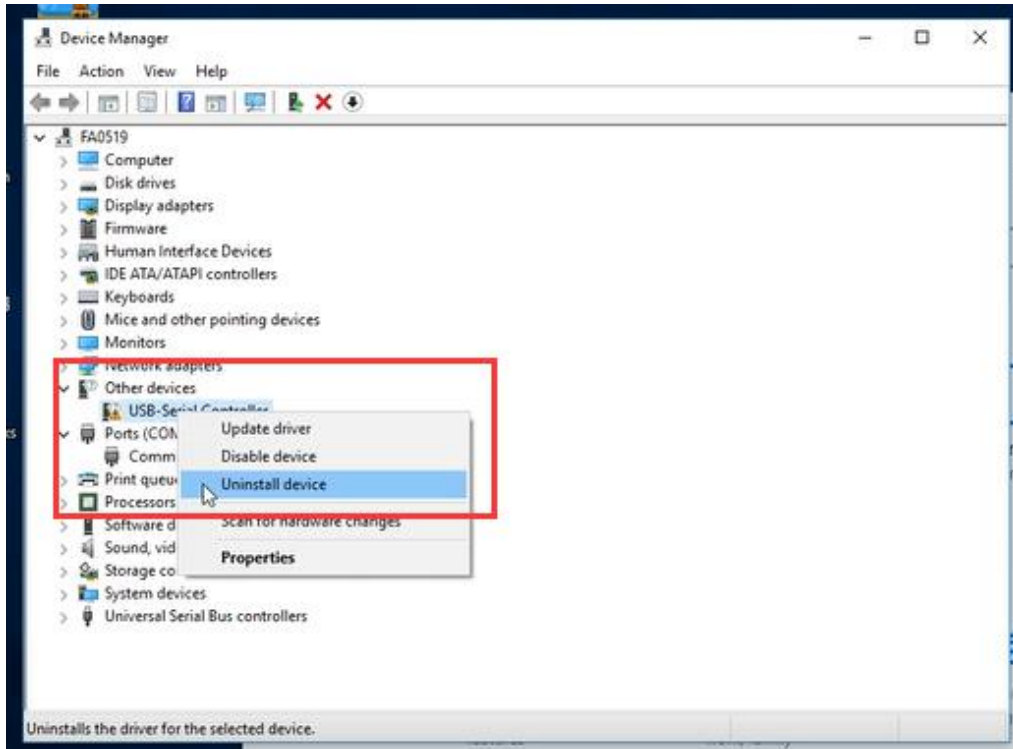
3. If there is no yellow warning triangle, your system install the correct driver and you are ready to load your programming software. (**Software Website** : walkietalkiesoftware.com)



4.If there is a yellow warning triangle under 'Ports' or 'Other Devices', you operating system has a previous driver that may cause incompatibility issues .



5. click the error device and click “Uninstall device” and you will need to update the driver to the latest driver:



IF THIS HAPPENS UPDATE THE DRIVER AND DOWNLOAD THE LATEST DRIVER AT :

<http://www.ftdichip.com/Drivers/VCP.htm>

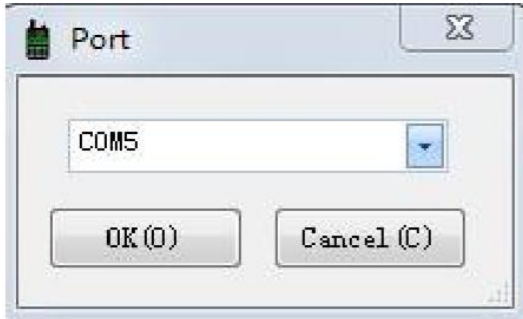
Currently Supported VCP Drivers:



Operating System	Release Date	Processor Architecture							Comments
		x86 (32-bit)	x64 (64-bit)	PPC	ARM	MIPSII	MIPSIV	SH4	
Windows*	2017-08-30	2.12.28	2.12.28	-	-	-	-	-	WHQL Certified. Includes VCP and D2XX. Available as a setup executable Please read the Release Notes and Installation Guides.
Linux	-	-	-	-	-	-	-	-	All FTDI devices now supported in Ubuntu 11.10, kernel 3.0.0-19 Refer to TN-101 if you need a custom VCP VID/PID in Linux VCP drivers are integrated into the kernel.
Mac OS X 10.3 to 10.8	2012-08-10	2.2.18	2.2.18	2.2.18	-	-	-	-	Refer to TN-105 if you need a custom VCP VID/PID in MAC OS
Mac OS X 10.9 and above	2019-12-24	-	2.4.2	-	-	-	-	-	This driver is signed by Apple
Windows CE 4.2-5.2**	2012-01-06	1.1.0.20	-	-	1.1.0.20	1.1.0.10	1.1.0.10	1.1.0.10	
Windows CE 6.0/7.0	2016-11-03	1.1.0.22 CE 6.0 CAT CE 7.0 CAT	-	-	1.1.0.22 CE 6.0 CAT CE 7.0 CAT	1.1.0.10	1.1.0.10	1.1.0.10	For use of the CAT files supplied for ARM and x86 builds refer to AN_319
Windows CE 2013	2015-03-06	1.0.0	-	-	1.0.0	-	-	-	VCP Driver Support for WinCE2013

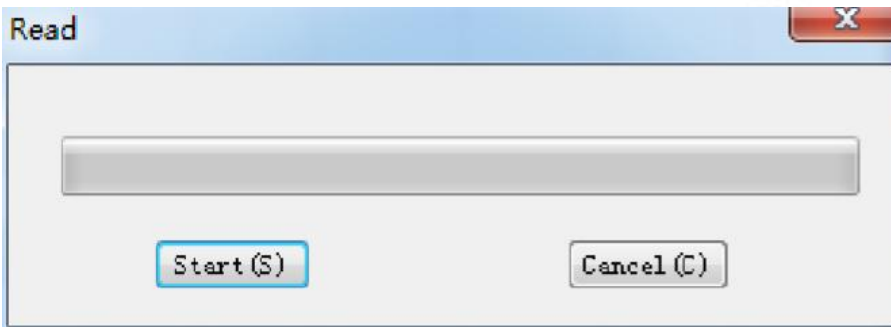
Manufacture Software Programming Process

1. Programming software download link: walkietalkiesoftware.com

Download and run the TD-H6 programming software, click Setting – Port menu, select the corresponding port same as the port number viewed by Device Manager, click “OK”.



2. Read the current information from the radio to your PC to create an initial program template. Click Program – Read Data From Radio, or simply  the  icon.



Channel Information												
Ch...	FHSS	Rx Freq	Rx QT/DQT	Tx Freq	Tx QT/DQT	Power	W/N	PTT-ID	Busy	Scan Add	Signal	Name
0												
1	OFF	400.00000	OFF	452.12500	OFF	H	W	OFF	OFF	OFF	1	
2	OFF	420.00000	91.5	453.22500	91.5	H	W	OFF	OFF	OFF	2	
3	OFF	454.32500	136.5	454.32500	136.5	H	W	OFF	OFF	OFF	3	
4	OFF	455.42500	151.4	455.42500	151.4	H	W	OFF	OFF	OFF	4	
5	OFF	456.52500	192.8	456.52500	192.8	H	W	OFF	OFF	OFF	5	
6	OFF	457.62500	241.8	457.62500	241.8	H	W	OFF	OFF	OFF	6	
7	OFF	458.72500	D025N	458.72500	D025N	H	W	OFF	OFF	OFF	7	
8	OFF	459.82500	D134N	459.82500	D134N	H	W	OFF	OFF	OFF	8	
9	OFF	461.92500	D274N	461.92500	D274N	H	W	OFF	OFF	OFF	9	
10	OFF	462.22500	D346N	462.22500	D346N	H	W	OFF	OFF	OFF	10	
11	OFF	463.32500	D503N	463.32500	D503N	H	W	OFF	OFF	OFF	11	
12	OFF	464.42500	D073I	464.42500	D073I	H	W	OFF	OFF	OFF	12	
13	OFF	465.52500	D703I	465.52500	D703I	H	W	OFF	OFF	OFF	13	
14	OFF	402.22500	OFF	402.22500	OFF	H	W	OFF	OFF	OFF	14	
15	OFF	437.42500	OFF	437.42500	OFF	H	W	OFF	OFF	OFF	15	
16	OFF	479.97500	OFF	479.97500	OFF	H	W	OFF	OFF	OFF	1	
17	OFF	138.55000	OFF	138.55000	OFF	H	W	OFF	OFF	OFF	1	
18	OFF	157.50000	OFF	157.50000	OFF	H	W	OFF	OFF	OFF	1	
19	OFF	172.75000	OFF	172.75000	OFF	H	W	OFF	OFF	OFF	1	

3. Channel Information

The TD-H6 radio has 128 channels, you can edit the channel number and channel information according to your needs. The following is an introduction to each term.

Name	Meaning	Setting	Description
RX Freq	Receiving frequency	VHF:136-174MHz UHF:400-520MHz	
TX Freq	Transmitting frequency	VHF:136-174MHz UHF:400-520MHz	
RX QT/DQT	Receiving CTCSS/DCS	Refer to the DCS table and CTCSS table in the manual.	Mutes the speaker of the transceiver in the absence of a specific low level digital signal. If the station you are listening to does not transmit this specific signal,you will not hear anything.
TX QT/DQT	Transmitting CTCSS/DCS	Refer to the DCS table and CTCSS table in the manual.	Transmits a specific low-level digital signal to unlock the squelch of a distant receiver (usually a repeater).
POWER	Transmit power	HIGH/LOW	High power:10W Middle:5W LOW: 1W
W/N	Channel bandwidth	WIDE/NARROW	Wideband (25kHz bandwidth) narrowband (12.5 kHz bandwidth).
PTT-ID	When to send the PTT-ID	OFF does not send code; BOT press PTT button to send code; EOT release PTT button to send code; BOTH press and release PTT button to send code	Codes are sent during either the beginning or end of a transmission.
Busy	Busy Channel Lockout	OFF/ON	ON: If the channel is occupied, when you press the [PTT] key on this channel, the radio will make a beep tone and will not transmit any signal. OFF: No matter if the channel is occupied, the radio will transmit the signal when you press the [PTT] key.
Scan add		OFF/ON	In the scan mode, whether add the channel to the scan list.

			ON: the channel is added to scan list; OFF: the channel cannot be scanned.
Signal	Signal code	1-15	Selects 1 of 15 DTMF codes. The DTMF codes are programmed with software and are up to 5 digits each
Name	Customize channel name	Up to 10 digits.	Support alphanumeric channel name.

4. Optional Feature

Click Edit – Optional Feature, you can set up more functions for the radio.

Optional Feature

Time Out: 45
Squelch Level: 3
VOX: OFF
Voice Switch: ON
Language: Chinese
Auto BackLight: 5
Work Mode: VFO

Channel Mode
Channel_A Display: CH + Freq
Channel_B Display: CH + Freq

A Band Freq Mode
Freq: 146.02500 MHz
FHSS: OFF
Tx Power: High
Rx QT/DQT: OFF
Tx QT/DQT: OFF
W/N: Wide
Step: 20.00 KHz
SFT_D: OFF
Offset: 00.000 MHz
Signal: 1

B Band Freq Mode
Freq: 440.02500 MHz
FHSS: OFF
Tx Power: High
Rx QT/DQT: OFF
Tx QT/DQT: OFF
W/N: Wide
Step: 20.00 KHz
SFT_D: OFF
Offset: 00.000 MHz
Signal: 1

DTMF ST: KB ST+ANI ST
Save Mode: Mode 1
Scan Mode: TO
PTT-ID: OFF
PTT Delay: 5

Tail Noise Clear: ON
(RPT Noise Clear(ms): 500
(RPT Noise Detect(ms): OFF

☒ FM Radio Enable
☒ Alarm Sound
Alarm Mode: TONE
Roger: OFF
Tx Under TDR Start: OFF
☐ TDR

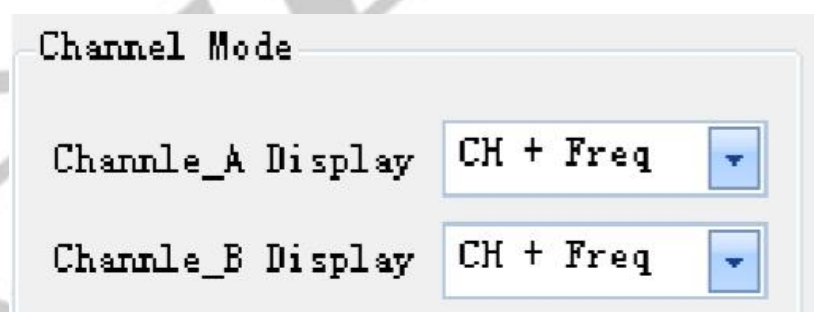
☐ KB_Lock ☐ BCL
☐ AutoLock ☒ Beep

Default Close

1) Basic Setting

Name	Meaning	Settings	Description
TOT(Time Out)	Transmission time-out timer	15-600(s)	This feature provides a limits transmission time to a programmed value. This will promote battery conservation by not allowing you to make excessively long-time transmissions and in the event of a stuck PTT switch, it can prevent interference to other users as well as battery depletion.
Squelch Level		0-9	Mutes the speaker of the transceiver in the absence of a strong signal. Squelch is either OFF or 1-9 levels. The higher level, the stronger the signal must be to in-mute the speaker.
VOX	Voice operated TX	0-10	When enabled it is not necessary to push the [PTT] button on the transceiver. Adjust the gain level to an appropriate sensitivity to allow smooth transmission.
Voice switch		ON/OFF	Toggle voice prompt switch
Language		Chinese/English	Switch the language of menu display and voice prompts
Auto backlight	Display time	OFF/0-10 (s)	Time-out for the LCD backlight.
Work mode		VFO	CHs is channel quantity
		Channel	

2) Channel Mode



You can customize the display on Channel A/B:

CH + Name: Display Channel Number and Channel Name (Name column in Channel information part)

CH + Freq: Display Channel Number and Frequency

3) DTMF

DTMF ST	KB ST+ANI ST	Tail Noise Clear	ON
Save Mode	Model	PRT Noise Clear	500
Scan Mode	TO	PRT Noise Detect	OFF
PTT-ID	OFF	<input type="checkbox"/> KB_Lock	<input type="checkbox"/> BCL
PTT Delay	5	<input type="checkbox"/> AutoLock	<input checked="" type="checkbox"/> Beep
Pwr On	Preset Logo		

Name	Setting	Description
DTMF ST (DTMF side tone of transmit code)	OFF: No DTMF Side Tones are heard	Determines when DTMF side tones can be heard from the transceiver speaker
	KB Side Tone: Side Tones are heard only from manually keyed DTMF codes	
	ANI Side Tone: Side Tones are heard only from automatically keyed DTMF codes	
	KB ST+ANI ST: All DTMF Side Tones are heard	
Save mode	OFF/Mode 1/Mode 2/Mode 3	Selects the ratio of sleep cycles to awake cycles (Mode 1/Mode 2/Mode 3). The higher number the longer the battery lasts. When enabled, a word or two might be missed when the frequency being monitored becomes active.
Scan mode	TO: Time Operation - scanning will resume after a fixed time has passed	Scanning Resume Method
	CO: Carrier Operation -Scanning Resume Method scanning will resume after the signal disappears	
	SE: Search Operation scanning will not resume	
PTT_ID	OFF: No ID is sent	When to Send PTT-ID; Codes are sent during either the beginning or end of a transmission.
	BOT : The selected S-CODE is sent at the beginning	
	EOT: The selected S-CODE is sent at the ending	
	BOTH: The selected SCODE is sent at the beginning and ending	
PTT Delay	0-30ms	Signal code sending delay
KB_LOCK		If you select this option, the

		keyboard is locked.
AutoLock(automatic keypad lock)		When ON, the keypad will be locked if not used in 8 seconds. Pressing the [# P/O] key for 2 seconds will unlock the keypad.
BCL(busy channel Lock-out)		Check: If the channel is occupied, when you press the [PTT] key on this channel, the radio will make a beep tone and will not transmit any signal. Uncheck: No matter if the channel is occupied, the radio will transmit the signal when you press the [PTT] key.
Beep(keypad beep)		Allows audible confirmation of a key press

4) Frequency mode

A Band Freq Mode

Freq MHz

FHSS

Tx Power

Rx QT/DQT

Tx QT/DQT

W/N

Step

SFT_D

Offset MHz

Signal

B Band Freq Mode

Freq MHz

FHSS

Tx Power

Rx QT/DQT

Tx QT/DQT

W/N

Step

SFT_D

Offset MHz

Signal

STEP: Select the amount of frequency change in VFO/Frequency mode when scanning or pressing the keys.

SFT_D: Enable access of repeaters in VFO/Frequency Mode ([OFF]: TX = RX (simplex); [+]: TX will be shifted higher than RX in frequency; [-]: TX will be shifted lower than RX in frequency)

Offset: Specifies the difference between the TX and RX frequency (For the explanation of TX Power, RX QT/DQT, TX QT/DQT, W/N, Signal, please refer to introduction above)

5) Backlight and FM Radio

The screenshot shows a configuration window with the following settings:

- Tail Noise Clear: ON
- RPT Noise Clear (ms): 500
- RPT Noise Detect (ms): OFF
- KB_Lock: ☐
- BCL: ☐
- AutoLock: ☐
- Beep: ☒
- FM Radio Enable: ☒
- Alarm Sound: ☒
- Alarm Mode: TONE
- Roger: OFF
- Tx Under TDR Start: OFF
- TDR: ☐

RPT Noise Clear: Squelch Tail elimination

RPT Noise Detect: Trunk tail delay


FM Radio Enable: When you check off, FM Radio function will be activated on the radio.

Roger: Sends an end-of-transmission tone to indicate to other stations that the transmission has ended

TX Under TDR Start: Transmit selection while in Dual Watch mode, when enabled, priority is returned to selected display once the signal in the other display disappears.

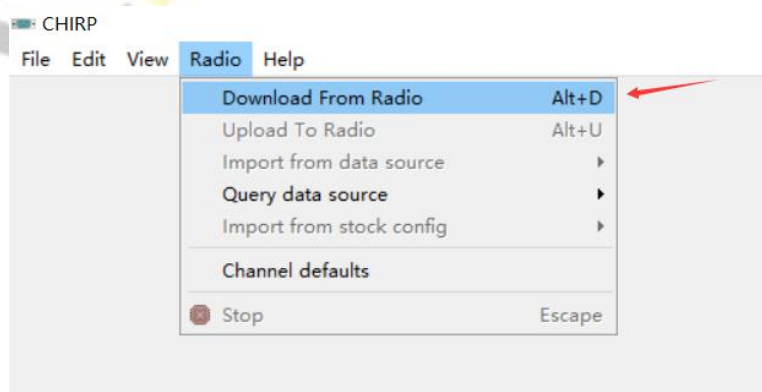
TDR: Dual Watch mode, the ability to monitor two channels at once can be a valuable asset.

5. Write and Save

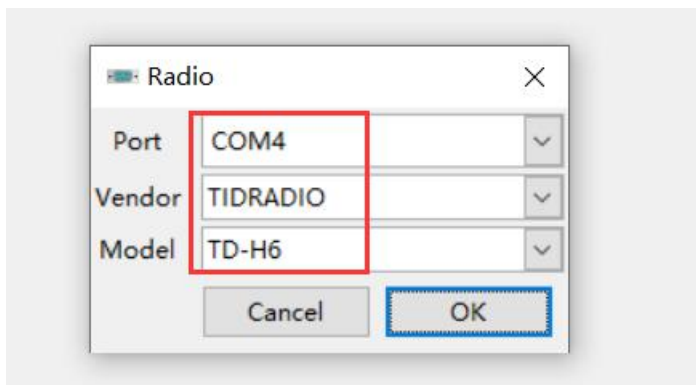
Click Program - Write Data To Radio, or click the  icon to write and save the setting to the radio.

TD-H6 Chirp Software Programming Process

1) Open the CHIRP software (Latest Version), click "Download From Radio" under "Radio"



2) Select the corresponding cable driver port, and select Model "TD-H6" under Vendor "TIDRADIO", then click "OK" to read the radio



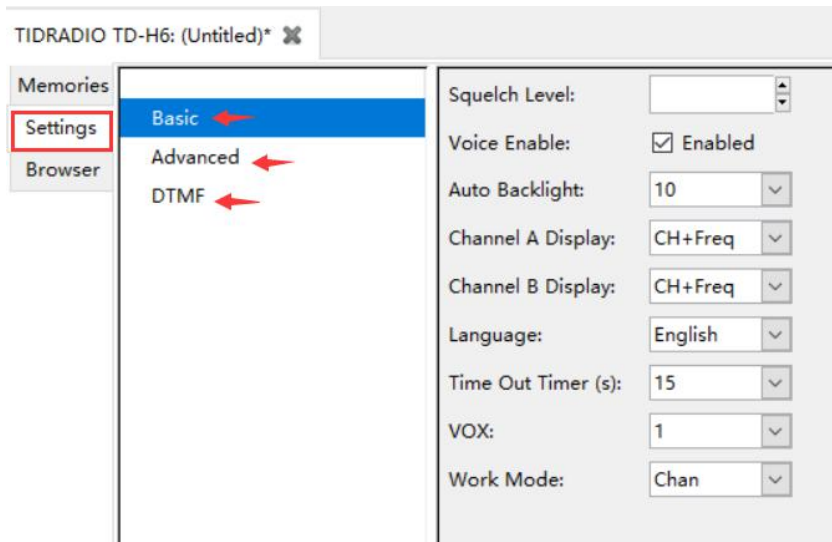
3) And you will come to the page of Memories, in which you can adjust the limited parameters (For the explanation of Channel, TX Frequency, RX Frequency, CTCSS/DCS, High/Low Power, and Wide/Narrow, Band. Please refer to introduction above)

TIDRADIO TD-H6: (Untitled)*

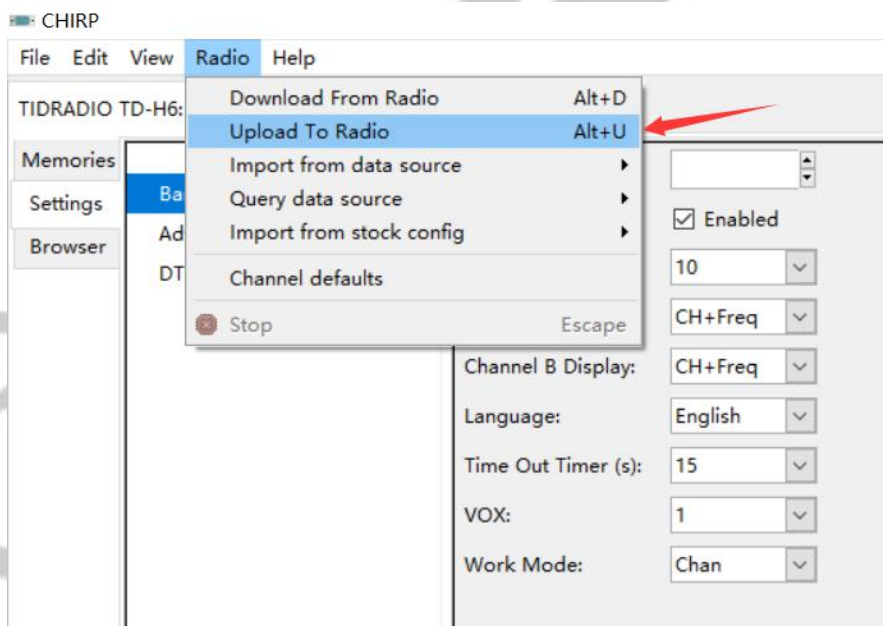
Memories Memory Range: Refresh Special Channels Show Empty Properties

Settings	Loc	Frequency	Name	Tone Mode	Tone	ToneSql	DTCS Code	DTCS Rx Code	DTCS Pol	Cross Mode	Duplex	Offset	Mode	Power	Skip
Browser	16	479.975000	(None)								(None)		FM	H	S
	13	465.525000	DTCS				723		RR		(None)		FM	H	S
	12	464.425000	DTCS				074		RR		(None)		FM	H	S
	11	463.325000	DTCS				503		NN		(None)		FM	H	S
	10	462.225000	DTCS				346		NN		(None)		FM	H	S
	9	461.925000	DTCS				274		NN		(None)		FM	H	S
	8	459.825000	DTCS				134		NN		(None)		FM	H	S
	7	458.725000	DTCS				025		NN		(None)		FM	H	S
	6	457.625000	TSQ		241.8						(None)		FM	H	S
	5	456.525000	TSQ		192.8						(None)		FM	H	S
	4	455.425000	TSQ		151.4						(None)		FM	H	S
	3	454.325000	TSQ		136.5						(None)		FM	H	S
	2	453.225000	TSQ		91.5						(None)		FM	H	S
	1	452.125000	TSQ		69.3						(None)		FM	H	S
	20	438.500000	(None)								(None)		FM	H	S
	15	437.425000	(None)								(None)		FM	H	S
	14	402.225000	(None)								(None)		FM	H	S
	19	172.750000	(None)								(None)		FM	H	S
	18	157.500000	(None)								(None)		FM	H	S
	21	155.700000	(None)								(None)		FM	H	S
	17	138.550000	(None)								(None)		FM	H	S

4) Then if you switch to the page of Settings, you can adjust the limited parameters(For the explanation of VOX Function, TOT, Squelch, FM Radio, Backlit, DTMF. Please refer to introduction above)



5) All the modification will be saved by clicking "Upload To Radio" under "Radio". Then you can check the settings you modified after reboot the radio.



*If you have any problem with the TD-H6 radio using or programming, please don't hesitate to contact us via support: walkietalkiesoftware.com. It's always our honor to help.